



bollé

R A C I N G O F F E R

2 0 1 9



AUSTRIA **SKI POOL**

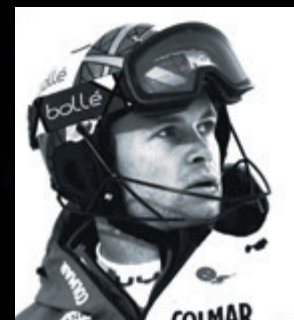
swissski OFFICIAL
POOL SUPPLIER



INTRODUCTION

Established in 1888, Bollé has earned a strong recognition in the ski racing community and all over the globe. This 130 years long success is the result of in-depth work based on an undiminished commitment to innovation and quality. Today, Bollé helmets & goggles are acknowledged for advanced technologies and comfort: always serving protection for athletes and improving performance. From materials to finish, no detail has been left to chance and each product has been developed to deliver comfort, protection and quality in all circumstances. That is why champions like Alexis Pinturault, Anna Veith, Tessa Worley, trust us to compete with our products, and before them Jean-Claude Killy, Luc Alphand, Didier Defago, Carole Montillet and Kale Palander. No matter the level of skill and the discipline,

Bollé has imagined a unique product always adapted to your needs.



Ref. 21925
Alexis Pinturault Signature Series
Phantom Vermillon® Blue

ALEXIS PINTURAULT

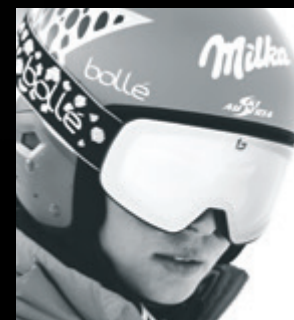
Alpine skier

1x Olympic Silver
2x Olympic Bronze
1x World Champs Bronze
2x Combined World Cup Winner
21x FIS World Cup Wins

SIGNATURE SERIES

Bollé has a long-lasting tradition of supporting the greatest champions. Since the 1960s, the brand provides top winter sport athletes with their competition gear, and they then share their insights with the development team to create products that meet the high standards of top-level sport.

In 2019, Anna Veith and Alexis Pinturault, two of the world's best skiers, put their personal touches on their favorite competition goggle NEVADA. An expert gear deserves nothing less than expert lens technology, and that is why these special editions feature Bollé's most advanced lens technology Phantom for ultimate vision on the snow.



Ref. 21924
Anna Veith Signature Series
Phantom Fire Red

ANNA VEITH

Alpine skier

1x Olympic Gold
2x Olympic Silver
3x World Champion
2x Overall World Cup Winner
2x Giant Slalom World Cup Winner
15x FIS World Cup Wins



CONFORM TO



Specifications

RH 2013

FULL CARBON FIBER

With full carbon fiber construction, Bollé's flagship race helmet Medalist Carbon Pro provides increased impact protection and light weight, the two absolutely essential demands of the world's best ski racers.

INTERCHANGEABLE LINING

Medalist Carbon Pro is delivered with two different linings in order to optimize fit and comfort. Size 53-56cm is provided with S & M washable linings. Size 57-60cm comes with L & XL washable linings.

LIGHTNESS

100% constructed with carbon fiber, Medalist Carbon Pro is one of the lightest race helmet on the market, weighing only 490g.

MEDALIST CARBON PRO

Designed to meet the demands of the world's best ski racers with refined aerodynamics and safety. MEDALIST CARBON PRO features full carbon fiber construction, and a reduced form factor that is a direct result of aerodynamic design. A customizable fit to provide perfect stability and comfort results in a real competitive advantage.

SIZES: FROM 53 TO 60 CM

Available Technologies

Detachable Washable Lining
Neck Roll
Weight: 490g
Buckle: Metallic
Full Carbon Fiber Construction

Chinbar Compatible
Conform to FIS Specifications
RH 2013
Multiple linings Included



Race Blue
31884 ▶ 53-56 cm
31885 ▶ 57-60 cm

MATCHES WITH
21919 NEVADA

CAT.2



MATCHES WITH
21937 MADDOX

CAT.3



White & Red
31405 ▶ 53-56 cm
31406 ▶ 57-60 cm

MATCHES WITH
21918 NEVADA

CAT.2



MATCHES WITH
21930 MADDOX

CAT.3



Medalist Chinbar Black
31407 ▶ One Size



MEDALIST



Lightweight, high performance composite helmet for ski racing.
Certified to FIS RH13, today's highest standard for ski racing. It gives you the confidence to reach your full performance potential.

SIZES: FROM 53 TO 60 CM

Available Technologies

Detachable Washable Lining
Neck Roll
Weight: 510g
Buckle: Metallic

Carbon Reinforced Fiberglass
Conform to FIS Specifications
RH 2013



Race Blue
31874 ▶ 53-54 cm
31875 ▶ 55-56 cm

MATCHES WITH
21919 NEVADA

CAT.2

MATCHES WITH
21937 MADDOX

CAT.3



Tanoshi Pink
31878 ▶ 53-54 cm
31879 ▶ 55-56 cm

MATCHES WITH
21937 MADDOX

CAT.3

MATCHES WITH
21909 LAIKA

CAT.2



Navy & Cyan
31397 ▶ 53-54 cm
31398 ▶ 55-56 cm

31399 ▶ 57-58 cm

31400 ▶ 59-60 cm

MATCHES WITH
21919 NEVADA

CAT.2

MATCHES WITH
21839 NEVADA

CAT.3



Anna Veith Signature Series
31401 ▶ 53-54 cm
31402 ▶ 55-56 cm

31403 ▶ 57-58 cm

31404 ▶ 59-60 cm

MATCHES WITH
21924 NEVADA

CAT.1-3

MATCHES WITH
21918 NEVADA

CAT.2



Black & Flash Green
31393 ▶ 53-54 cm
31394 ▶ 55-56 cm

31395 ▶ 57-58 cm

31396 ▶ 59-60 cm

MATCHES WITH
21938 MADDOX

CAT.2



Medalist Chinbar Black
31407 ▶ One Size



MUTE

Approved by our strong team of athletes including Alexis Pinturault, David Ryding and Loïc Meillard, you'll be well equipped with MUTE and its SLALOM CHINBAR to hit the gates and beat your chrono.

SIZES: FROM 52 TO 62 CM

Available Technologies

- Injected ABS

Air Flow Extractor

Integrated Ventilation

Click-to-Fit™ System
- Detachable Washable Lining

Removable Earpads

Weight: 495g

Buckle: Classic

SLALOM CHINBAR FOR MUTE

- 31925 ▶ For small & medium sizes
- 31943 ▶ For large size



CHINBAR NOT INCLUDED

Shiny Black & Yellow

- 31916 ▶ 52-55 cm
- 31918 ▶ 59-62 cm
- 31917 ▶ 55-59 cm

MATCHES WITH
21938 MADDOX

CAT.2

MATCHES WITH
21921 MADDOX

CAT.3



CHINBAR NOT INCLUDED

Matte Grey & White

- 31910 ▶ 52-55 cm
- 31912 ▶ 59-62 cm
- 31911 ▶ 55-59 cm

MATCHES WITH
21938 MADDOX

CAT.2

MATCHES WITH
21937 MADDOX

CAT.3



CHINBAR NOT INCLUDED

Shiny Red & White

- 31919 ▶ 52-55 cm
- 31921 ▶ 59-62 cm
- 31920 ▶ 55-59 cm

MATCHES WITH
21938 MADDOX

CAT.2

MATCHES WITH
21937 MADDOX

CAT.3



CHINBAR NOT INCLUDED

Shiny Race White

- 31922 ▶ 52-55 cm
- 31924 ▶ 59-62 cm
- 31923 ▶ 55-59 cm

MATCHES WITH
21919 NEVADA

CAT.2

MATCHES WITH
21937 MADDOX

CAT.3



NEVADA

A bold style for this new cylindrical frameless goggle, NEVADA has rapidly become the first choice of Team Bollé athletes. Now everyone can hit the mountains with this perfect combination of style and technology.

FIT: MEDIUM / LARGE

Available Technologies

- Available with Phantom
Available in PC Photochromic
Double Lens
P80+ Anti-fog
Carbo-glas® Anti-Scratch
- UVA/UVB Protection
Flow Tech® Venting
Triple layer face foam
Siliconised strap



21919
Matte White & Blue Race
Aurora



21918
Matte White Corp
Green Emerald



21839
Matte Blue & White Diagonal
Bronze Blue



21921
Matte Yellow Line
Black Chrome

MADDOX

Based on one of our best sellers' design, MADDOX is a goggle featuring modern and bold lines, combined with Bollé's best lens technologies. You'll never be disappointed wearing them.

FIT: MEDIUM / LARGE

Available Technologies

- Available with Phantom
Available in PC Photochromic
Double Lens
P80+ Anti-fog
Carbo-glas® Anti-Scratch
- UVA/UVB Protection
Flow Tech® Venting
Double Layer face foam
Siliconised strap



21937
Matte White Corp
Vermillon® Blue



21938
Matte Black Corp
Light Vermillon® Blue



21930
Matte Red Line
Sunrise

LAIKA

New spherical smaller fit in the range, LAIKA is the perfect goggle mixing the greatest Bollé lens technologies, a modern design, and some trendy patterns.



21909
Matte White Polychrome
Aurora

FIT: SMALL / MEDIUM

Available Technologies

- Available with Phantom
Wide field of view
Equalizer®
P80+ Anti-fog
Carbo-glas® Anti-Scratch
- UVA/UVB Protection
Flow Tech® Venting
Triple Layer face foam
Siliconised strap

REPLACEMENT LENSES



NEVADA		
51106	LEMON GUN CAT.1	51110 CLEAR CAT.0
MADDOX		
51241	LEMON GUN CAT.1	51242 CLEAR CAT.0
LAIKA		
51237	LEMON GUN CAT.1	51238 CLEAR CAT.0

QUICKSTER

For the young, aspiring skiers, QUICKSTER is a robust and full-coverage helmet that provides improved protection and is certified to CE EN1077A. Air Extractor vents keep the head cool as the hot air is forced out by the airflow in channels located just underneath the shell. The Click-To-Fit™ system provides great comfort, adjusting as your junior racer grows.

JUNIOR HELMET

SIZES: FROM 49 TO 55 CM

Available Technologies

Injected ABS
Air Flow Extractor
Integrated Ventilation
Click-to-Fit™ System

Detachable Washable Lining
Weight: 590g
Buckle: Classic



Shiny Race Blue
31930 ▶ 49-52 cm 31931 ▶ 52-55 cm

MATCHES WITH
21966 ROCKET



MATCHES WITH
21964 ROCKET



Shiny White Red
31711 ▶ 49-52 cm 31712 ▶ 52-55 cm

MATCHES WITH
21966 ROCKET



MATCHES WITH
21964 ROCKET



Shiny Pink White
31715 ▶ 49-52 cm 31716 ▶ 52-55 cm

MATCHES WITH
21961 ROCKET PLUS



MATCHES WITH
21774 ROCKET



Shiny Black Green
31713 ▶ 49-52 cm 31714 ▶ 52-55 cm

MATCHES WITH
21779 ROCKET PLUS



ROCKET PLUS

We took all of the great technologies of ROCKET and then added features to create the exciting ROCKET PLUS. Outfitted with mirrored lens and double layer face foam, it offers outstanding looks and optimal comfort for young riders.



21779
Matte Black & Green
Black Chrome



21961
Anna Veith Signature Series
Rose Gold

FIT: SMALL

Available Technologies

Double Lens
P80+ Anti-fog
Carbo-glas® Anti-Scratch

UVA/UVB Protection
Flow Tech® Venting
Double Layer face foam

ROCKET

Designed for the 6+ year old ski fanatics, ROCKET offers robust construction and modern aesthetics. Bollé's Junior goggles are developed to ensure our future champions will enjoy every ride. Every model has the features kids need and want, including the best helmet compatibility.



21966
Matte Blue Aerospace
Vermillon®



21964
Matte Blue Aerospace
Rosy Bronze



21774
Matte White Race
Vermillon®

FIT: SMALL (6+ years)

Available Technologies

Double Lens
P80+ Anti-fog
Carbo-glas® Anti-Scratch

UVA/UVB Protection
Flow Tech® Venting

DEALER CONTACT



BOLLE.COM



@BolleEyewear



@bolle_eyewear



@bolle_eyewear

Photo Credits : Agence Zoom