

OPHTHALMIC 2023



bollé

| PERFORMANCE INNOVATION SINCE 1888 |



CONTENTS

P.4

BRAND

P.6

**ACETATE
COLLECTION**

P.20

**METAL
COLLECTION**

BRAND



REFERENCE IN OUTDOOR SPORTS SINCE 1888, **BOLLÉ IS**
A MARKET LEADER FOR EYEWEAR AND HELMETS.



RECOGNIZED FOR ITS HIGH PERFORMANCE, DESIGN, AND INNOVATION,
BOLLÉ IS LAUNCHING A NEW OPHTHALMIC COLLECTION WITH BOTH
ACETATE AND METAL MODELS.

THIS COLLECTION STAYS TRUE TO THE BRAND'S DNA WITH A
STRONG OUTDOOR SPORTS TECH LOOK AND FEEL. A UNIQUE OFFER
SYMBOLIZED BY A CUTTING-EDGE SIGNATURE FLEX HINGE.

BOLLÉ / OPHTHALMIC

ACETATE COLLECTION



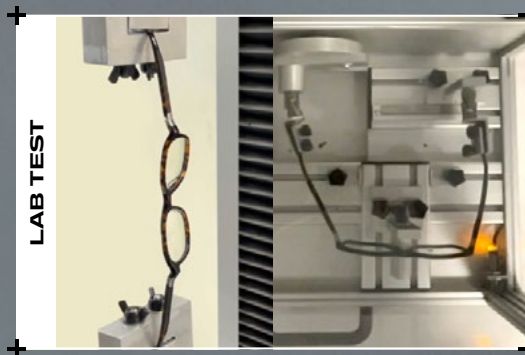
A UNIQUE SIGNATURE HINGE

DESIGNED BY BOLLÉ



BOLLÉ HINGE DNA

Oblique lines with top and bottom chamfers



BOLLÉ LOGO

Discrete laser engraving



INTEGRATED FLEX SYSTEM

Spring flex hinge integrated in the frame :

- compatible with various frame shapes
- 5 barrel-hinge for enhanced strength

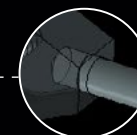
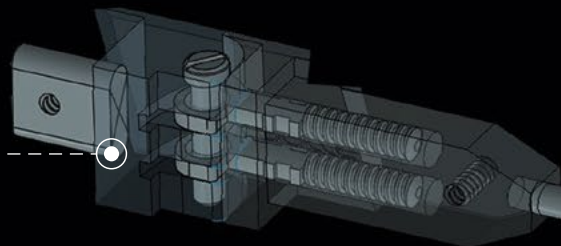


EASY REPAIR

Hinge fixed into the lug and temple with 2 screws

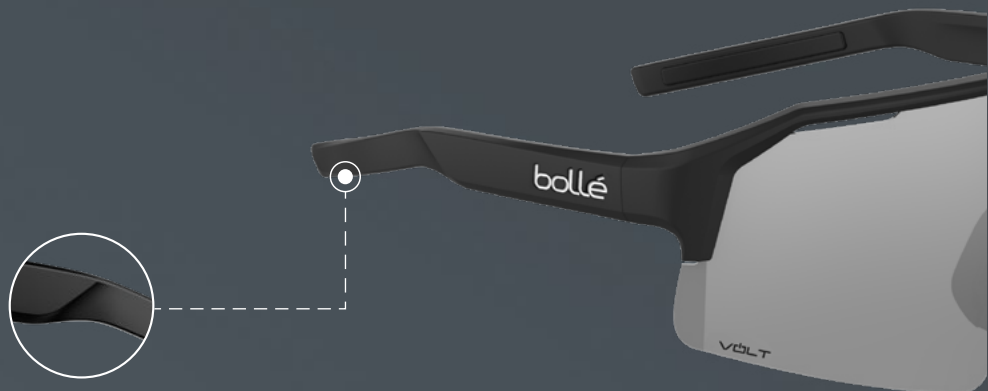


Double spring system for more power and precision



Adjustable temple with wire core

DETAILS MATTER

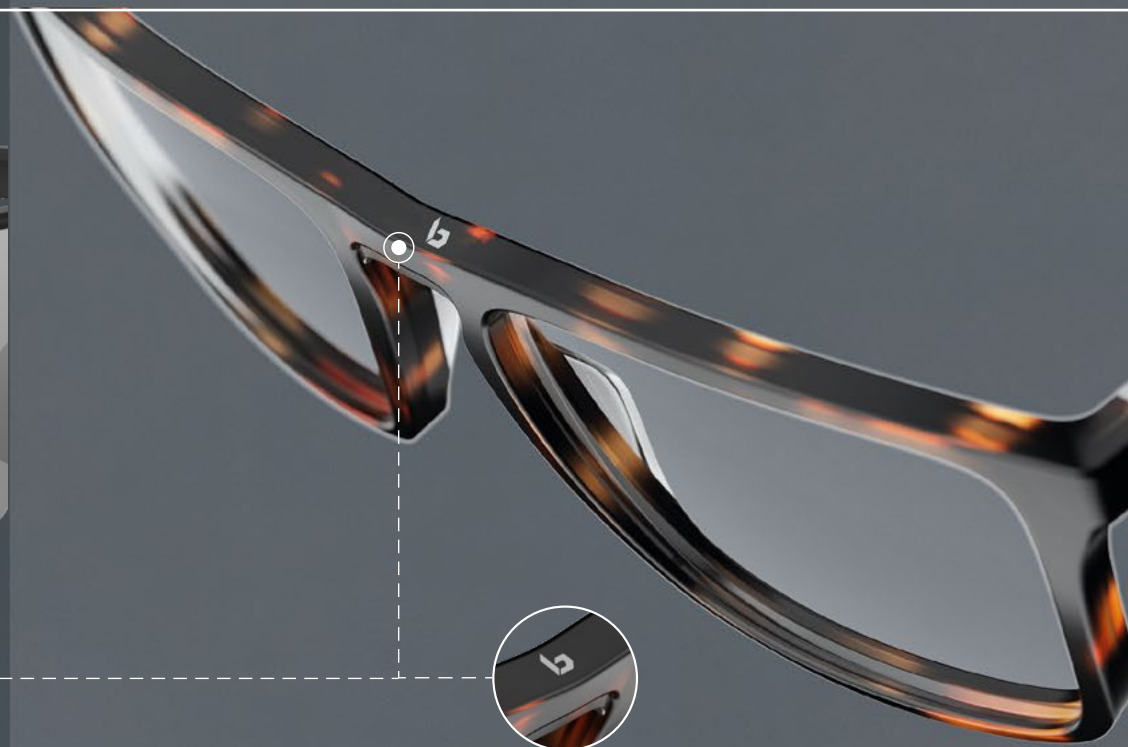
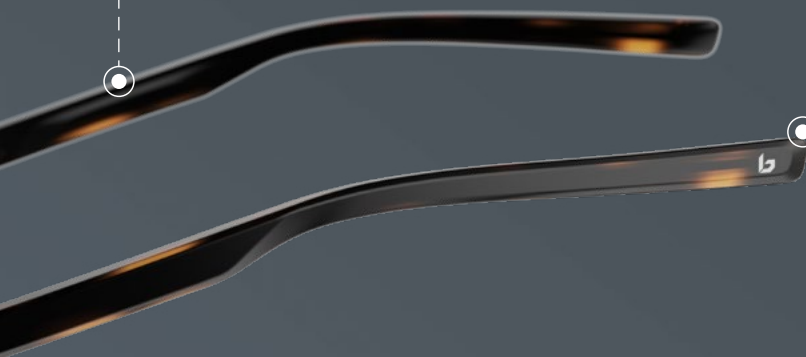


PERFORMANCE DNA

SHIFTER temples inspired surfacing

STAINLESS STEEL WIRE CORE

End tips can easily be adjusted to fit with various head shapes



OPHTHALMIC RANGE SIGNATURE

Metal B logo inside the acetate : small and discrete
Bollé detail on the top & on the end tips

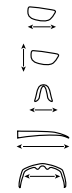


JASP 01



Fit : Small-Medium | **Base :** 5

Material : Bio acetate



Lens width : 48 mm

Lens height : 44 mm

Nose dimension : 21 mm

Temple dimension : 140 mm

Hinge to hinge : 129 mm



Elegant, the JASP 01 has a revisited pantos shape with pronounced angles and a slight keyhole nose. Refined down to the last detail, this model in bio-acetate is equipped with the Bollé signature flex hinge, making it extremely comfortable and an easy fit for many faces.



BV002001

Black Shiny 0111
Hinge : Gun Metal Matte



BV002002

Dark Havana Shiny 0231
Hinge : Gun Metal Matte



BV002003

Transparent Light Blue Shiny 9221
Hinge : Gun Metal Matte



BV002004

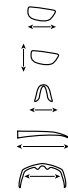
Dark Red Matte 1812
Hinge : Gun Metal Matte

JASP 02



Fit : Medium | **Base :** 5

Material : Bio acetate



Lens width : 51 mm

Lens height : 42 mm

Nose dimension : 18 mm

Temple dimension : 140 mm

Hinge to hinge : 131 mm



The JASP 02 is a classic rounded square model in bio-acetate. Refined down to the last detail, this frame is equipped with the Bollé signature flex hinge, making it extremely comfortable and an easy fit for many faces.



BV004001

Black Shiny 0111
Hinge : Gun Metal Matte



BV004002

Dark Havana Shiny 0231
Hinge : Gun Metal Matte



BV004003

Transparent Light Grey Shiny 6121
Hinge : Gun Metal Matte



BV004004

Dark Blue Matte 8012
Hinge : Gun Metal Matte

JASP 03



Fit : Medium | **Base :** 5

Material : Bio acetate

-  **Lens width :** 56 mm
-  **Lens height :** 38 mm
-  **Nose dimension :** 15 mm
-  **Temple dimension :** 140 mm
-  **Hinge to hinge :** 134 mm



A very classic rectangular model made of bio-acetate. Refined down to the last detail, the JASP 03 is equipped with the Bollé signature flex hinge, making it extremely comfortable and an easy fit for many faces.

EPID 01



Fit : Medium | **Base :** 5

Material : Bio acetate

-  **Lens width :** 54 mm
-  **Lens height :** 40 mm
-  **Nose dimension :** 17 mm
-  **Temple dimension :** 140 mm
-  **Hinge to hinge :** 131 mm



Bollé's modern version of a rectangular shape with a slight keyhole nose, the EPID 01 shows a distinct style. Refined down to the last detail, this model in bio-acetate is equipped with the Bollé signature flex hinge, making it extremely comfortable and an easy fit for many faces.



BV005001

Black Matte 0112
Hinge : Gun Metal Matte



BV005002

Havana Shiny 2231
Hinge : Gun Metal Matte



BV005003

Olive Matte 6812
Hinge : Gun Metal Matte



BV005004

Transparent Grey Blue Shiny 2021
Hinge : Gun Metal Matte



BV001001

Black Matte 0112
Hinge : Gun Metal Matte



BV001002

Dark Havana Shiny 0231
Hinge : Gun Metal Matte



BV001003

Transparent Dark Grey Shiny 2121
Hinge : Gun Metal Matte



BV001004

Transparent Dark Blue Shiny 8021
Hinge : Gun Metal Matte

SHAPED BY
THE ELEMENTS

ACETATE_COLLECTION
MODEL : EPID 02



BOLLE

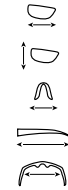


EPID 02



Fit : Medium-Large | **Base :** 5

Material : Bio acetate



Lens width : 56 mm

Lens height : 44 mm

Nose dimension : 16 mm

Temple dimension : 140 mm

Hinge to hinge : 135 mm



A modern version of the aviator, the EPID 02 shows character and personality. Refined down to the last detail, this model in bio-acetate is equipped with the Bollé signature flex hinge, making it extremely comfortable and an easy fit for many faces.



BV003001

Black Matte 0112
Hinge : Gun Metal Matte



BV003002

Havana Shiny 2231
Hinge : Gun Metal Matte



BV003003

Transparent Dark Grey Shiny 2121
Hinge : Gun Metal Matte



BV003004

Olive Matte 6812
Hinge : Gun Metal Matte

BOLLÉ / OPHTHALMIC

METAL COLLECTION



COVEL 01



Fit : Medium | **Base :** 5

Material : Metal sheet front and co-molded rubber / bio-sourced nylon end-tips

-  **Lens width :** 55 mm
-  **Lens height :** 38 mm
-  **Nose dimension :** 17 mm
-  **Temple dimension :** 145 mm
-  **Hinge to hinge :** 134 mm



With its angular shape, the COVEL 01 is a modern rectangular frame with a metal sheet front. Inspired by Bollé's sport DNA, this model is equipped with adjustable end tips made with a co-molded rubber and bio-sourced nylon. Its thin S-curved temple and high-performance flex hinge makes it super light, very comfortable and easy to fit.



BV006001

Gun Metal Matte 2152
Stripe : Black



BV006002

Black Matte 0152
Stripe : Grey



BV006003

Black Red Matte 0152
Stripe : Red



BV006004

Blue Matte 1252
Stripe : Black

COVEL 02



Fit : Medium | **Base :** 5

Material : Metal sheet front and co-molded rubber / bio-sourced nylon end-tips

-  **Lens width :** 48 mm
-  **Lens height :** 45 mm
-  **Nose dimension :** 20 mm
-  **Temple dimension :** 145 mm
-  **Hinge to hinge :** 126 mm



A classic pantos frame with a metal sheet front for a sporty look. Inspired by Bollé's sport DNA, the COVEL 02 is equipped with adjustable end tips made with a co-molded rubber and bio-sourced nylon. Its thin S-curved temple and high-performance flex hinge makes it super light, very comfortable and easy to fit.



BV007001

Gun Metal Matte 2152
Stripe : Black



BV007002

Black Matte 0152
Stripe : Grey



BV007003

Light Green Matte 8852
Stripe : Light Grey



BV007004

Copper Matte 2252
Stripe : Dark Brown

MALAC 01



Fit : Medium | **Base :** 5

Material : Metal rim front and co-molded rubber / bio-sourced nylon end-tips

-  **Lens width :** 54 mm
-  **Lens height :** 39 mm
-  **Nose dimension :** 16 mm
-  **Temple dimension :** 145 mm
-  **Hinge to hinge :** 134 mm



The MALAC 01 is a sporty distinctive rectangular metal frame. Inspired by Bollé's sport DNA, this model is equipped with adjustable end tips made with a co-molded rubber and bio-sourced nylon. Its thin S-curved temple and high-performance flex hinge makes it super light, very comfortable and easy to fit.



BV008001

Gun Metal Matte 2152
Stripe : Black



BV008002

Dark Silver Matte 4152
Stripe : Black



BV008003

Black Matte 0152
Stripe : Red



BV008004

Dark Blue Matte 1252
Stripe : White

MALAC 02



Fit : Medium | **Base :** 5

Material : Metal rim front and co-molded rubber / bio-sourced nylon end-tips

-  **Lens width :** 55 mm
-  **Lens height :** 36 mm
-  **Nose dimension :** 16 mm
-  **Temple dimension :** 145 mm
-  **Hinge to hinge :** 136 mm



Bollé's classic rectangular metal frame model. Inspired by its sport DNA, the MALAC 02 is equipped with adjustable end tips made with a co-molded rubber and bio-sourced nylon. Its thin S-curved temple and high-performance flex hinge makes it super light, very comfortable and easy to fit.



BV009001

Gun Metal Matte 2152
Stripe : Black



BV009002

Dark Silver Matte 4152
Stripe : Black



BV009003

Black Matte 0152
Stripe : Red



BV009004

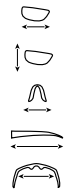
Pale Gold Matte 8652
Stripe : Black

MALAC 03



Fit : Small | **Base :** 5

Material : Metal rim front and co-molded rubber / bio-sourced nylon end-tips



Lens width : 48 mm

Lens height : 41 mm

Nose dimension : 20 mm

Temple dimension : 145 mm

Hinge to hinge : 124 mm



Refined and elegant, the MALAC 03 has a revisited pantos shape. Inspired by Bollé's sport DNA, the MALAC 03 is equipped with adjustable end tips made with a co-molded rubber and bio-sourced nylon. Its thin S-curved temple and high-performance flex hinge makes it super light, very comfortable and easy to fit.



BV010001

Gun Metal Matte 2152
Stripe : Black



BV010002

Dark Silver Matte 4152
Stripe : Black



BV010003

Blue Matte 1252
Stripe : White



BV010004

Pale Gold Matte 8652
Stripe : Black

MODEL : Covet 02



MODEL : Malac 02



MODEL : Malac 03



26
25
24
23
22
21
20
19
18
17
16
15
14
13
12
11
10
9
8
7
6
5
4
3
2
1
0

REACT FOR GOOD

AT BOLLÉ, WE DON'T CLAIM WE ARE GOING TO SAVE THE PLANET. HOWEVER, WE DO STRIVE TO REDUCE OUR IMPACT. IF WE ARE NOT A PART OF THE SOLUTION, **WE REFUSE TO BE A PART OF THE PROBLEM.**

STEP BY STEP, WE ARE HEADING TOWARD A MORE SUSTAINABLE APPROACH SYMBOLIZED BY OUR REACT FOR GOOD CAMPAIGN.

WE ARE PROUD TO ANNOUNCE THAT OUR OPHTHALMIC COLLECTION FOLLOWS THE PATH OF OUR WINTER AND SUMMER PRODUCTS WITH AN **ECO-FRIENDLY APPROACH.**

LET'S REACT FOR GOOD !

0 1 2 3 4 5 6 7 8 9 10 11 12 13 14 15 16 17 18





EASILY RECYCLABLE PRODUCTS

The various materials and elements of our ophthalmic models are **easily separable** to facilitate repairs and end-life product recycling.



100% RECYCLED DEMO LENSES

Our demo lenses are made with **100% recycled material** with the brand logo being printed directly on them to prevent the unnecessary addition of labels.



PRODUCTS MADE OF BIO-SOURCED MATERIAL

The acetate made of **54% renewable sources has been certified by ISCC+** and the metal models feature co-molded Thermogrip/ bio-sourced nylon end tips.

RANGE OVERVIEW

SMALL FIT



P 13
JASP 01
48□21 140

MEDIUM FIT



P 15
JASP 02
51□18 140



P 16
JASP 03
56□15 140



P 17
EPID 01
54□17 140

LARGE FIT



P 19
EPID 02
56□16 140



P 23
COVEL 02
48□20 145



P 26
MALAC 03
48□20 145



P 22
COVEL 01
55□17 145



P 24
MALAC 01
54□16 145



P 25
MALAC 02
55□16 145

ACETATE

METAL

SPARE PARTS

ACETATE



Acetate temples
sold with 2 small screws

BV001001-P
BLACK SHINY 0111



Acetate temples
sold with 2 small screws

BV001002-P
BLACK MATTE 0112



Acetate temples
sold with 2 small screws

BV001003-P
DARK HAVANA SHINY
0231



Acetate temples
sold with 2 small screws

BV001004-P
HAVANA SHINY 2231



Acetate temples
sold with 2 small screws

BV001005-P
TRANSPARENT DARK
GREY SHINY 2121



Acetate temples
sold with 2 small screws

BV001006-P
TRANSPARENT GREY
BLUE SHINY 2021



Acetate temples
sold with 2 small screws

BV001007-P
DARK BLUE MATTE
8012



Frame screws acetate

BV003001-P



Hinge replacement kit

BV005001-P



Hinge screws acetate

BV004001-P

METAL



Metal temples
sold with 2 small screws

BV002001-P
GUN METAL MATTE 2152
STRIPE : BLACK



Metal temples
sold with 2 small screws

BV002002-P
DARK SILVER 4152
STRIPE : BLACK



Metal temples
sold with 2 small screws

BV002003-P
BLACK MATTE 0152
STRIPE : RED



Metal temples
sold with 2 small screws

BV002004-P
PALE GOLD MATTE 8652
STRIPE : BLACK



Metal temples
sold with 2 small screws

BV002005-P
DARK BLUE MATTE 1252
STRIPE : WHITE

*Nose pads, hinge screw, rimlock screw, end-tips shared by ophthalmic and metal sunglasses

ACCESSORIES



100% recycled
ophthalmic lens cloth

BAO10001



100% recycled
polyester hard case

BA548001

B2B ORDERING PLATFORM



REQUEST ACCESS TO OUR NEW 24/7 ORDERING PLATFORM



Access to special offers and promotions



Real-time stock availability



Access to order history and invoices



24/7 instant ordering tool



Access to full online catalogs



Import products to your cart

MY ACCOUNT KEY INFORMATION :

- Order status
- Order history
- Invoice history
- Download PDF of your orders & invoices
- Download statement of account
- Your information (phone number, email, etc.)

KEY FUNCTIONALITIES :

- Customer Specific Product Pricing
- Quick order
- Product and marketing items
- Stock Visibility
- Back Order Functionality
- CSV Import - Mass import items to your cart
- Ability to enter your own PO at checkout
- Ability to download Product Catalogs
- Access to ESG/Conformity files
- Access to marketing kits

The B2B platform is available for customers in France, Germany, Austria, UK, Ireland, Italy, Spain, and USA. If you are in a country not listed, please reach out to your local distributor.

Please contact us for any questions:
b2becommerce@bollebrands.com

ANDORRA
BOLLE BRANDS Spain
C/Alava, 60-62 6°1
08005 Barcelona
Tel: 34.93.486.48.00
Fax: 34.93.309.29.11
Email: clientes@bollebrands.com

ARGENTINA
Casa Para Ti
Gral. Mariano Acha 3244. 1 piso.
[1430], C.A.B.A. ARGENTINA
Tel: (+54)11 4543 3875
Email: info@casapartiti.com.ar

AUSTRALIA / NEW ZEALAND
Sunglass Collective
PO Box 62
Ferntree Gully VIC 3156
Australia
Tel: +61 03 8202 4300
Email: australia@bollebrands.com

AUSTRIA
Bollé Brands
34, Rue de la Soie
69100 Villeurbanne - France
Tel: +43 662 243290
Email: austria@bollebrands.com

BELGIUM
Technop NV
Dendermondesteeweg 335
B-9070 DESTELBERGEN
Tel: +32 9 238 2362
Fax: +32 9238 2362
Email: nv.technop@technop.be

BOLIVIA
Fiasports
Avenida Hilandería 4025 Barrio
Cañoto Cuarto Anillo Santa Cruz
- Bolivia
Email: email.comercial@fiasportsbolivia.com
Tel: +591-77640543

BOSNIA & HERZEGOVINA
Rodeo Team d.o.o.
Koroska Cesta 53
4000 KRANJ
Tel: +386 420 15 400
Fax: +386 420 15 401
Email: info@rodeoteam.si

BULGARIA
Optigroup Ltd.
1A, Plachkovica Str./1164 Sofia
Tel: +359884201040 / 0800 14777
Email: office@optigroup.bg

CARIBBEAN
Goris Group Co.
1824 NW 21 Terrace Miami,
FL 33142
Tel: (305) 371-7170
Fax: (305) 371-7625
Email: sales@gorisgroup.com

CHILE
Sport Optic S.A.
Av. Los Jardines 927, Oficina 502.
Ciudad Empresarial, Huechuraba
Santiago
Email: daniel@sportoptic.cl
www.sportoptic.cl

CHINA
Beijing Bestway Trading Co. Ltd
Room 916, Rui Cheng International
No.71,
Chao Yang Road, Chao Yang
District,
Beijing, China
Tel: +86 10 6558 6281

COSTA RICA
Fiasports
Condominio Valle Sol, Guachipelin
Escazú. Casa #6.
Email: jtefel@cmasterperu.com
Tel: +506 6207-9668

CROATIA
Rodeo Team d.o.o.
Koroska Cesta 53
4000 KRANJ
Tel: +386 420 15 400
Fax: +386 420 15 401
Email: info@rodeoteam.si

CYPRUS
Eyeland
5 ez thermistocles dervis street
po box 22910
1066 NICOSIA
Tel: +357 22 66 44 44
Fax: +357 22 75 25 55
Email: eyeland@pitides.com

CZECH REPUBLIC
Gaudio - Detail s.r.o.
Sinkulova 74/7
Praha 4, CZ-147 00
Mobile: +420 603 456 572
Tel/Fax: +420 224 214 198

DENMARK
OPO Scandinavia AB
Celsiusgatan 29. 1 tr
212 14 MALMÖ
SWEDEN
Website: www.opo.se
Tel: +45 35 86 00 00
E-mail: info@opo.se

ECUADOR
Fiasports
Calle Union y Progreso con
Marcelino Navarrete, Galpón N° 3,
Cotocollao - Quito.
Email: comercial@infrimaecuador.com.ec
Tel: +593 96 896 9567

EL SALVADOR
Consulta Corporation, S.A. De C.V.
Av Buganvilias, Residenciales
Florenzia, Apto 16, Colonia San
Francisco, San Salvador, El
Salvador
Tel: (503) 2223-3742
Email: info@consultacorp.com

FINLAND
Neonsun Oy
Puusepänkatu 5
13110 Hameenlinna
Tel: 00 358 3 612 7222
Email: neonsun@neonsun.fi

FRANCE
BOLLE BRANDS
34 rue de la soie
69100 Villeurbanne
Tel: 33.1.41.44.94.80
Fax: 33.1.41.44.06.09
Email: contact@bollebrands.com

GEORGIA
MGT Optics LLC
No. 50, Samtredia St.
Tbilisi, Georgia
Tel: +995 555 178121
E-mail: malekgt@gmail.com

GERMANY
BOLLE BRANDS
34, Rue de la Soie
69100 Villeurbanne - France
Tel: +49 8031 233480
Email: germany@bollebrands.com

GREECE
Kokkoris Optics
111 Gounari Street
16561 GLYFADA
Tel: +30 210 962 77 00
Fax: +30 210 960 65 50
Email: info@fashioncode.gr

GUATEMALA
Consulta, S.A.
19 Ave 2-29 Zona 14, Guatemala,
Guatemala
Tel: (502) 2414-6000
Email: info@consultacorp.com

HOLLAND
Bobo's Eyewear
HAMBAKENWETERING 20
5231 DC S'HERTOGENBOSCH Tel:
00 31 73 690 1777
Fax: 00 31 73 690 1778
Email: info@bobos.nl

HONDURAS
Consulta Investments, S.A.
Colonia Alameda 2av Edificio Cruz
Heath, Tegucigalpa, Honduras
Tel: (504) 2213-3681
Email: info@consultacorp.com

HONG KONG & MACAU
Goldman Concepts Agencies
Unit 16, 2/F, Kai Fuk Industrial
Centre,
1 Wang Tung Street, Kowloon Bay
Hong Kong
Tel: +852 2305 2211
Email: goldman7@netnavigator.com

ICELAND
Echo LTD
Skutuvogur 10 d
104 REYKJAVIK
Tel: +3545159999
Fax: +354 515 9990
Email: gkristinn@echo.is

INDIA
GKB RX Lens PVT LTD
P4-Kasba Industrial Estate,
phase 1 - Kolkata 700107 India
Tel: 91-33-24424354
Fax: 91-33-24424940

INDONESIA/BALI
PT. Nasional Proteksi Produk
Lindeteves Trade Center Lt UG
Blok 89
No. 7 JL. Hayam Wuruk No. 127
Kel. Mangga Besar, Kec. Taman
Sari,
Jakarta Barat, DKL Jakarta 11180
Indonesia
Tel: +62 21 013807
Email: sales@nappro.co.id

IRELAND
BOLLE BRANDS UK Ltd.
Unit C83 Barwell Business Park
Leatherhead Road
Chessington, Surrey
KT9 2NY - United Kingdom
Tel: 44.0.20.8391.4700
Fax: 44.0.20.8391.4733
Email: uk@bollebrands.com

ITALY
BOLLE BRANDS Italy S.R.L.
Corso Roma 13bis/1
10024 Moncalieri (TO)
Tel: 39.011.661.85.83
Fax: 39.011.661.87.68
Email: italia@bollebrands.com

JAPAN
MATERIAL SPORTS INC
1-30 Sakura-machi, Moriguchi-shi,
Osaka, 570-0027
Tel: +81-6-6992-2070
Email: 06@69922070.com

KAZAKHSTAN
WINNER GROUP LTD
Republic ave, 68 - 220
Nur-Sultan
Republic of Kazakhstan
Tel: +7 (701) 101 07 38
Email: winnerastana@gmail.com

LATVIA
UAB Prosport Lt
Vandziogalos str 94
KAUNAS, 47467
Lithuania
Tel: +370 67270159
Fax: +370 37210580
Email: info@prosport.lt

LITHUANIA
UAB Prosport Lt
Vandziogalos str 94
KAUNAS, 47467
Lithuania
Tel: +370 67270159
Fax: +370 37210580
Email: info@prosport.lt

MACEDONIA
Rodeo Team d.o.o.
Koroska Cesta 53
4000 KRANJ
Tel: +386 420 15 400
Fax: +386 420 15 401
Email: info@rodeoteam.si

MALAYSIA
Focus Point Vision Care Group Sdn.
Bhd. Unit 1, 3 & 5 - Jalan PUJ 1/37
Dataran Prima
47301 Petaling Jaya
Selangor Malaysia
Tel: +603-7880 5520
Fax: +603-7880 6631
Email: cp.su@focus-point.com

MEXICO
CONSORCIO JUBH S DE RL DE CV
BLV. INTERLOMAS N°5 INT B-06
COL. SAN FER LA HERRADURA,
HUIXQUILUCAN EDO DE MEXICO
C.P 52787 MEXICO
Tel: +525552341111
Email: ventas@jubh.mx

NORTH AMERICA (USA & CANADA)
Bollé Brands North America
2810 Caribou Court, Suite 160,
Carlsbad CA 92010.
Tel: 1 (800) 779-3937
Email: na@bollebrands.com

NORWAY
OPO Scandinavia AB
Celsiusgatan 29. 1 tr
212 14 MALMÖ

PANAMA
Motta Internacional S.A.
Calle 14 entre avenidas Santa
Isabel y Roosevelt, Zona Libre
de Colon, Colon Republica
de Panama
Tel: 507.431.6000
Fax: 507.431.0109
Email: n.gomez@motta-int.com
www.motta-int.com

PERU
Fiasports
Alfredo Benavides 768, of 1106.
Miraflores, Lima, Perú.
Email: aldoarambulo@quosports.com
Tel: +51 997547454

POLAND
SPORT PEAK Sp. z o.o
ul.Domaniewska 47/7
02-672 Warszawa
Poland
Tel: +48 605 249 098
Email: buiro@sportpeak.pl

ROMANIA & MOLDAVIA
KIDS TOWN
OVIDIU BALEA STREET NR 57
TIMISOARA
Tel: 0040733932448/
0040733932449
Email: fischer@sportgames.ro

SERBIA & MONTENEGRO
RodeoTeam d.o.o.
Koroska Cesta 53
4000 Kranj
Tel: +386 420 15 400
Fax: +386 420 15 401
Email: info@rodeoteam.si

SLOVAKIA
Regina Import SRO
Podluzany 1
935 27 Podluzany 1
Tel: +421 36 632 22 07
Fax: +421 36 632 21 82
Email: info@reginaimport.sk

SLOVENIA
Rodeo Team d.o.o.
Koroska Cesta 53
4000 Kranj
Tel: +386 420 15 400
Fax: +386 420 15 401
Email: info@rodeoteam.si

SOUTH AFRICA
2020 VISION CARE (PTY) LTD
UNIT B4, NORTHLANDS DECO
PARK
AVANTE GARDE AVENUE
NORTHRIDING
JOHANNESBURG 2188
South Africa
Tel: 27 82 446 1350
Email: info@2020visioncare.co.za

SPAIN
BOLLE BRANDS
34 rue de la soie
69100 Villeurbanne
Tel: 33.1.41.44.94.80
Fax: 33.1.41.44.06.09
Email: contact@bollebrands.com

SWEDEN
OPO Scandinavia AB
Celsiusgatan 29. 1 tr
212 14 MALMÖ
SWEDEN
Website: www.opo.se
Tel: +46 40 45 65 50
E-mail: info@opo.se

SWITZERLAND
Kairos/Optisport SA
28 Route de Chalais
3965 CHIPPIS
Tel: +41 27 451 12 00
Fax: +41 27 451 12 01
Email: info@k-optisports.ch

TURKEY
ANT OPTIK : Gayrettepe Mahallesi,
Pazar Sokak,
Bareli Is Merkezi, No: 4/3,
Besiktas
GAYRETTEPE - ISTANBUL, 34400
Turkey
Tel: +9 [0]12 288 60 99
Email: info@antoptik.com

//CREDITS

//PHOTO
Studio Picabel
Semaphore and Co
Stéphane Candé
Layla Jean-Kerley
PANAM/ERA

//DESIGN/CREATION
Bollé Brands
Native Communication

**SHAPED BY
THE ELEMENTS**

ACETATE_COLLECTION
MODEL : JASP 01



BOLLE

