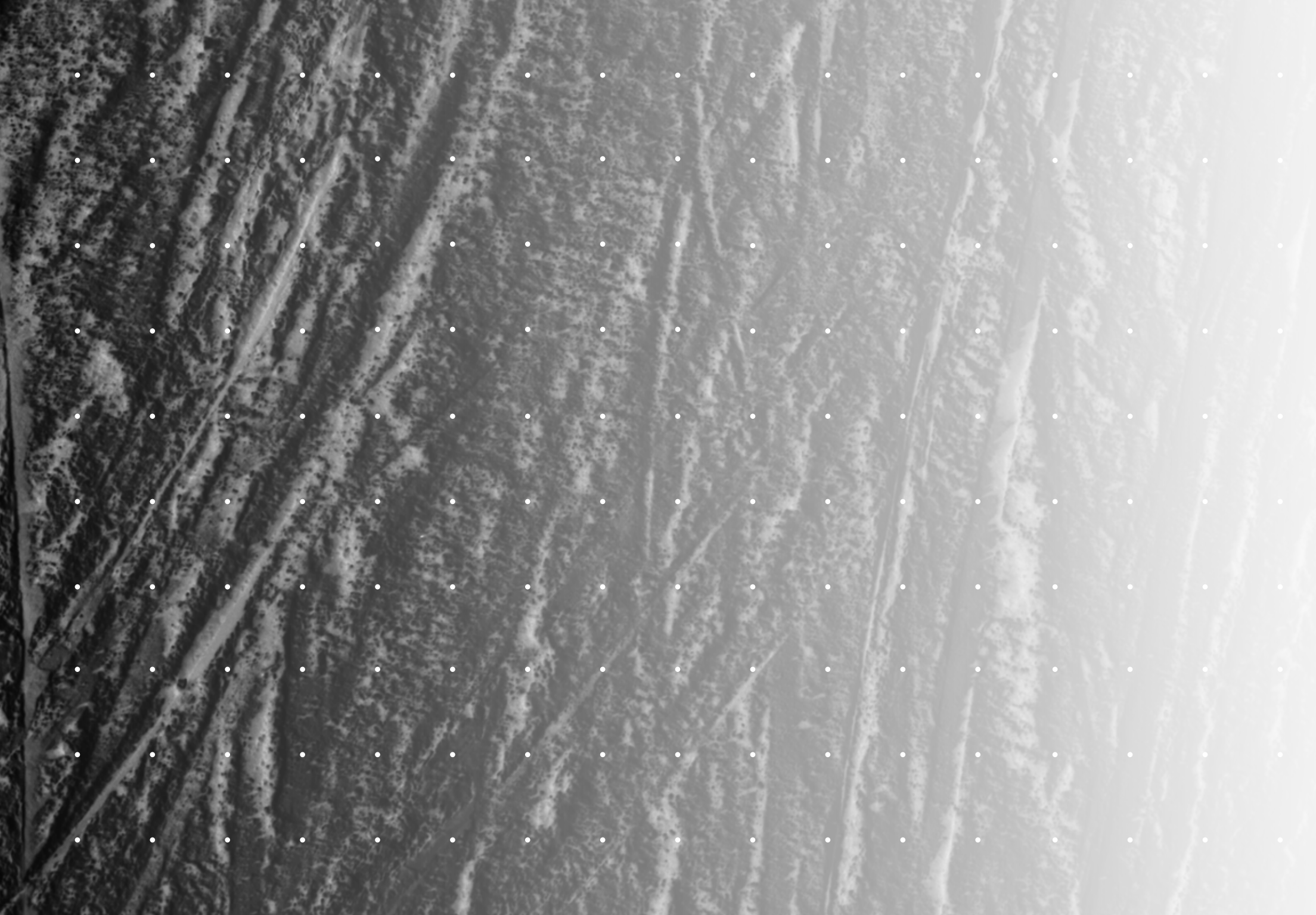





# TABLE OF CONTENTS

4	ATHLETES
<b>6</b>	<b>MAN</b>
8	JACKETS
18	PANTS
22	MID LAYERS
30	BASE LAYERS
<b>36</b>	<b>WOMAN</b>
38	JACKETS
44	PANTS
48	MID LAYERS
52	BASE LAYERS
<b>56</b>	<b>ACCESSORIES</b>
58	D-AIR® SKI 2
64	SAFETY
90	SCARABEO SAFETY
96	GLOVES
104	SCARABEO GLOVES
106	HELMETS
115	GOGGLES
118	SCARABEO HELMETS
119	SCARABEO GOGGLES
122	OVERVIEW
126	TECHNOLOGIES
130	SIZE CHART

SKI COLLECTION  
2024/2025





**Designed to protect,  
in all conditions.**

**The safety of moving with the  
utmost freedom and skill together  
with comfort and thermal  
insulation to enjoy every slope.**

**Innovation and design at the  
service of performance.  
Free to think only about the slope.**

***DAINESE***

Protection to Dare

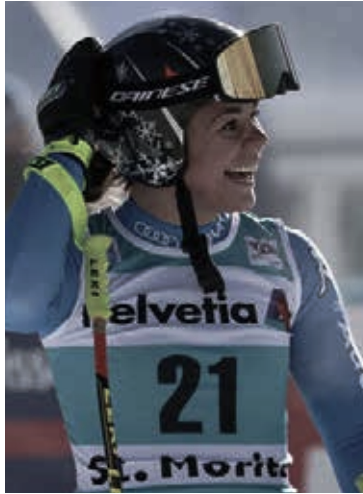


# ATHLETES

---



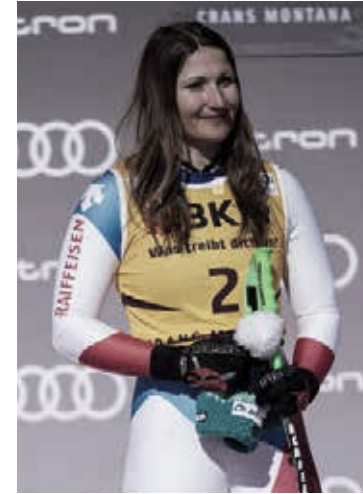
SOFIA GOGGIA



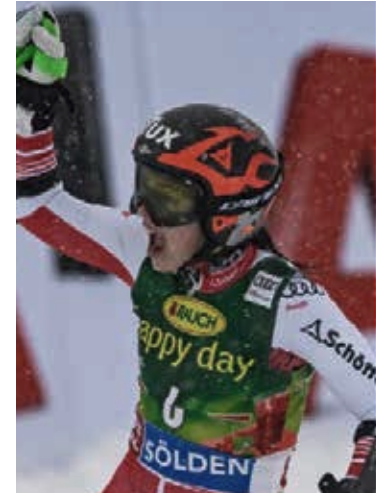
NICOL DELAGO



VALERIE GRENIER



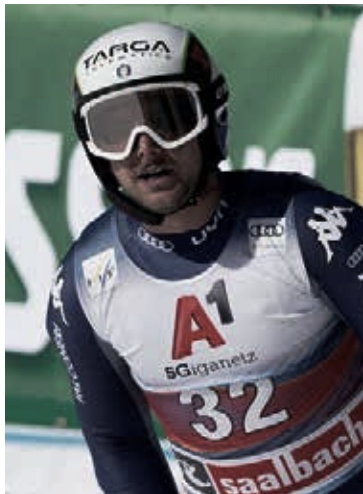
PRISKA NUFER



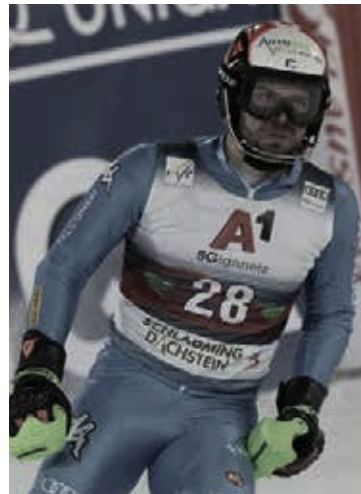
STEPHANIE BRUNNER



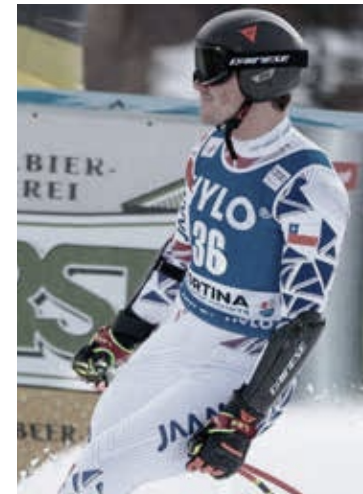
STEFANO GROSS



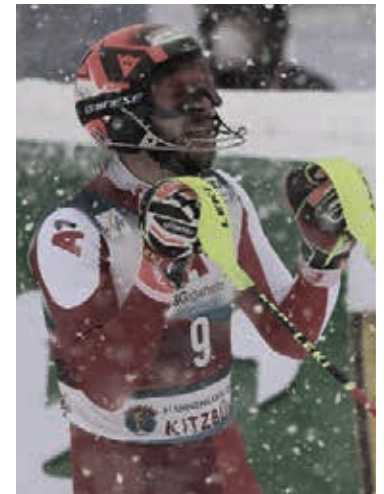
EMANUELE BUZZI



SIMON MAURBERGER



HENRIK VON APPEN

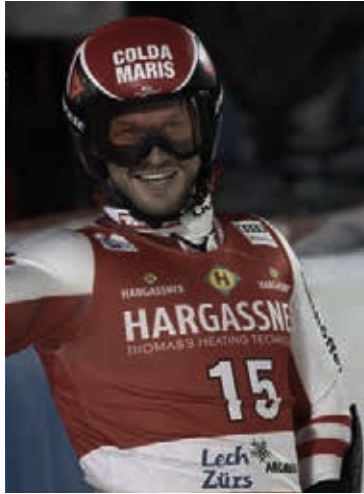


MICHAEL MATT

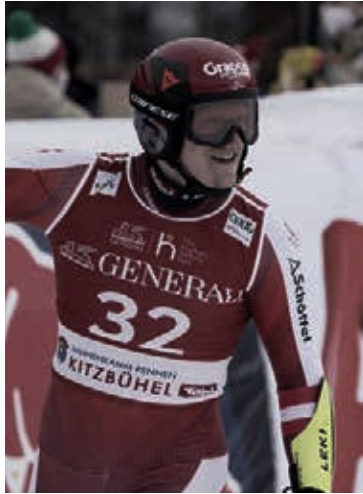


# ATHLETES

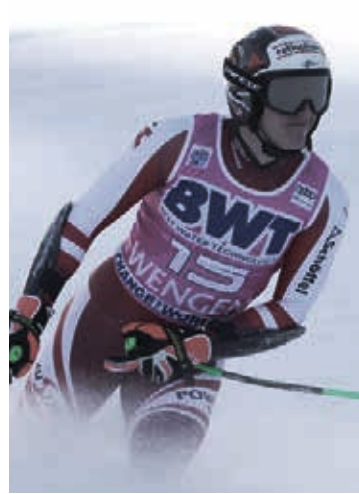
---



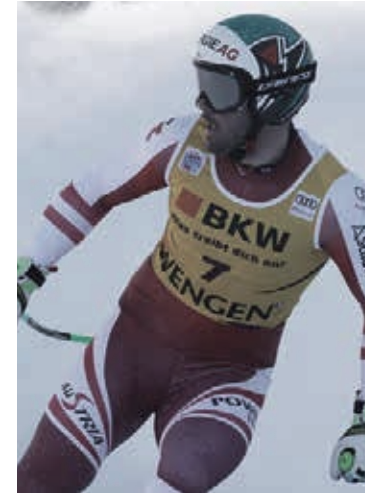
CHRISTIAN HIRSCHBUEHL



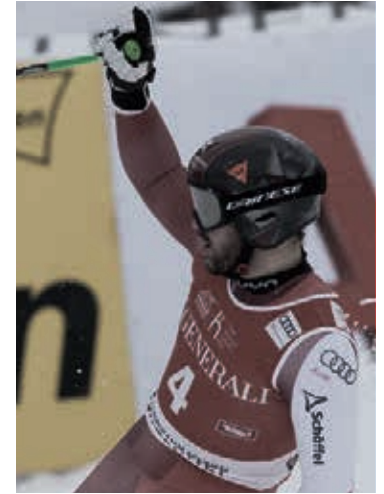
STEFAN BABINSKY



RAPHAEL HAASER



VINCENT KRIECHMAYR



DANIEL HEMETSBERGER



LUCA AERNI



LOIC MEILLARD



ADRIAN SEJERSTED

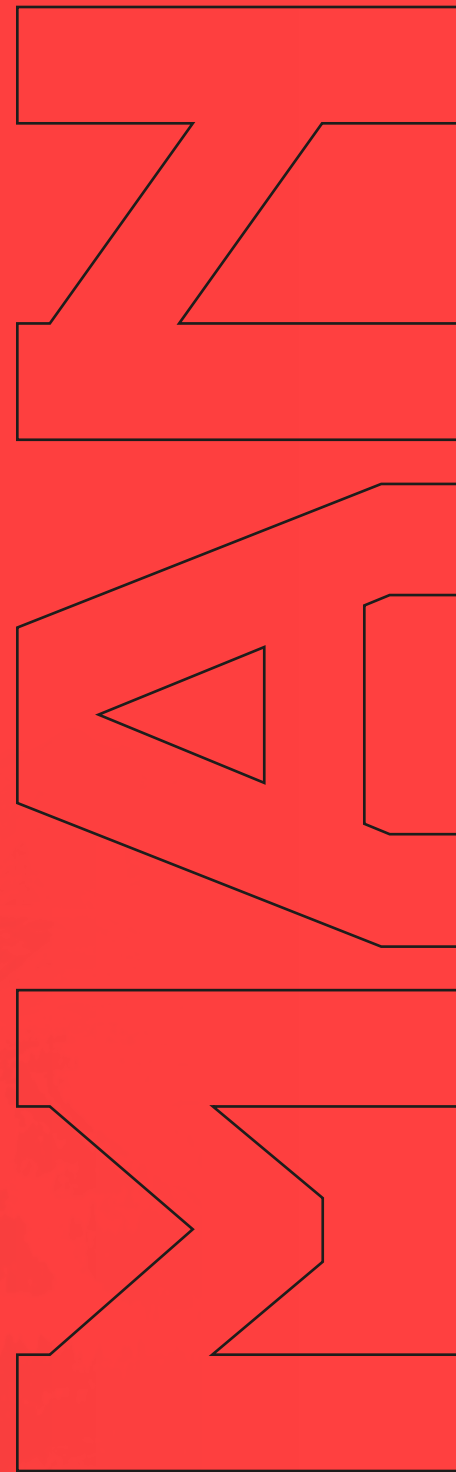






Advanced materials and  
integrated protective technologies,  
to express your full potential on the snow.

Modular design and thermal insulation  
to face even the most difficult conditions,  
in total control.





## LEVITA DERMIZAX EV™ FLEXAGON JACKET

NEW


**Dermizax EV**  
 Waterproof Breathable Fabric

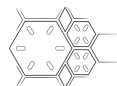
## PART NUMBER

2047400024

## SIZES

XS - XXL

Performance, comfort and protection are the main features of Levita Dermizax EV™ Flexagon, the top-of-the-range ski jacket from the Dainese collection with integrated Flexagon Lev. 2 protector. Designed for skiers looking for the ultimate in atmospheric agent and impact protection, this jacket is made of Japanese Toray Dermizax®, fabric, 20,000mm/20,000g/m²/24h, an extremely breathable and waterproof membrane. The four-way stretch fabric makes it comfortable and versatile, allowing skiers to express their potential and enjoy the mountains to the full. To further increase the level of performance of this jacket, the Dermizax®EV membrane fabric is combined with PrimaLoft® Black padding, guaranteeing maximum thermal insulation in cold temperature conditions. The lightness of these materials allows greater freedom of movement on the track while keeping its promise in terms of performance. Thermal comfort is also guaranteed by the large front air vents, for optimal ventilation during milder days. The design of the adhesives on the front area of the jacket took inspiration from the shape of the protectors, to express safety and protection also through aesthetic language, in pure Dainese style. Two front pockets and three inside pockets, snow skirt with silicone bottom and adjustable hood complete the equipment on this extraordinary certified ski jacket.


**FLEXAGON  
BACK PROTECTOR  
INCLUDED**

**42A**  
 RACING-RED

**230**  
 DUFFEL-BAG/BLACK

**Y41**  
 STRETCH-LIMO

## OVERVIEW

- Ski jacket in Dermizax® Toray breathable waterproof fabric combined with PrimaLoft® Black padding, with integrated Flexagon Lev. 2 protector.

## CHARACTERISTICS

- 1 inner pocket
- 2 Big armpit air intakes
- 2 front pockets
- Cuff Snow Gaiter
- Double puller front zip
- Drawstring adjustable at bottom
- Fully seam sealed
- Inner Cargo Pockets
- Skipass pocket
- Snow Gaiter with wide silicone gripper
- Waterproof zippers

## ERGONOMICS

- Fully adjustable fitted hood
- Strap cuff adjustments

## GENERAL TECHNICAL FEATURES

- 4 way stretch fabric
- Breathability 20.000 g/m²/24hrs
- Water column 20.000 mm

## MAIN MATERIALS

- Dermizax®EV stretchable membrane
- PrimaLoft® Black insulation (80g/m² core - 60g/m² sleeves)

## FIT

- Athletic

## HOMOLOGATION

- CE EN 1621.2 Level 2

## PROTECTION

- Flexagon - Crash Absorb Soft Memory Foam (CE EN 1621.2 LEV 2)
- Integrated Flexagon Back protector

## IVENTA DERMIZAX EV™ JACKET

NEW


**Dermizax EV**  
 Waterproof Breathable Fabric

## PART NUMBER

2047400028

## SIZES

XS - XXL

A waterproof technical jacket with Dermizax®EV outer membrane (20,000mm/20,000g/m²/24h) and soft PrimaLoft® Black padding, Iventa Dermizax®EV™ is designed for the skiers who want a technical down jacket with the guarantee of waterproofing and breathability offered by the Dermizax®membrane fabric. The properties of this material make the garment versatile even without technical compromises, ensuring a particularly comfortable fit due to the flexibility of the four-way stretch membrane. Ergonomics combine with practicality, provided by internal and external pockets, waterproof zipper, snow gaiter inside the sleeve and adjustable hood.


**022**  
 NIGHTBLUE

**84I**  
 DUFFEL-BAG

**42A**  
 RACING-RED

**81M**  
 ELEPHANT GREY

**Y41**  
 STRETCH-LIMO

## OVERVIEW

- Waterproof technical down jacket with Dermizax® EV membrane and PrimaLoft® Black padding.

## CHARACTERISTICS

- 1 inner pocket
- 2 Big armpit air intakes
- 2 front pockets
- Cuff Snow Gaiter
- Inner Cargo Pockets
- Snow Gaiter with wide silicone gripper
- Waterproof zippers

## ERGONOMICS

- Fully adjustable fitted hood

## GENERAL TECHNICAL FEATURES

- Breathability 20.000 g/m2/24hrs
- Water column 20.000 mm

## MAIN MATERIALS

- Dermizax®EV stretchable membrane
- PrimaLoft® Black insulation (80g/m2 core - 60g/m2 sleeves)

## FIT

- Athletic

## AVERA DERMIZAX EV™CORE READY JACKET



**Dermizax EV**  
Waterproof Breathable Fabric

**PART NUMBER**  
2047400025

**SIZES**  
XS - XXL

A perfect combination of comfort and protection in pure Dainese style, Avera Dermizax Ev™Core Ready is the ski jacket designed for those looking for maximum performance on the slopes without compromise. High performance is guaranteed by the combination of the 4-way stretch Dermizax®EV fabric (20,000mm/20,000g/m²/24h), waterproof and breathable, and the warm PrimaLoft® Black padding, allowing skiers to show off their full potential through its lightness and comfort. The Avera Dermizax Ev™Core Ready has a pocket designed for inserting the Core protector, with the unique ergonomics and fit of Dainese. Also contributing to increasing the ergonomic levels of this ski jacket are the two long side openings, which transform into ventilation areas in the upper part of the garment and pockets in the lower one, ensuring that skiers have maximum body temperature control, even during the most intense activities. Two front pockets and three internal pockets, silicone snow skirt and adjustable hood complete the equipment on this technical jacket designed for all ski enthusiasts.



READY FOR  
**CORE BP**



**42A**  
RACING-RED



**84I**  
DUFFEL-BAG



**84M**  
ELEPHANT GREY/STRETCH LIMO



**Y41**  
STRETCH-LIMO

### OVERVIEW

- Ski jacket in waterproof and breathable Dermizax® EV fabric and warm PrimaLoft® Black padding, designed for inserting the Core protector and featuring large ventilation areas.

### CHARACTERISTICS

- 1 inner pocket
- 2 Big armpit air intakes
- Cuff Snow Gaiter
- Double puller front zip
- Drawstring adjustable at bottom
- Fully seam sealed
- Inner Cargo Pockets
- Skipass pocket
- Snow Gaiter with wide silicone gripper
- Waterproof zippers

### ERGONOMICS

- Fully adjustable fitted hood
- Strap cuff adjustments

### GENERAL TECHNICAL FEATURES

- 4 way stretch fabric
- Breathability 20.000 g/m²/24hrs
- Water column 20.000 mm

### MAIN MATERIALS

- Dermizax®EV stretchable membrane
- PrimaLoft® Black insulation (80g/m² core - 60g/m² sleeves)

### FIT

- Athletic

### PROTECTION

- CORE Back Protector Pocket



## SKI DOWNJACKET

## PART NUMBER

204749529

## SIZES

XS - XXXL

The Ski Downjackets are an iconic part of the Dainese collection, designed to maximize thermal insulation and ensure superior comfort in all weather conditions. The SKI DOWNJACKET is a winter must-have. A cross-functional down jacket with Dermizax® EV 20,000-mm, 20,000-g/m², 24h waterproof membrane, elastic in four directions, and warm 750 fill power goose down padding. Suitable for any activity on the snow owing to the high levels of mobility and breathability guaranteed by the elastic membrane, and significant insulating properties. A fixed hood, internal waist gaiters and snow cuffs inside the sleeves round out the details of a garment designed to suit all conditions.



01G

BLACK-CONCEPT


**Dermizax EV**  
 Waterproof Breathable Fabric

## CHARACTERISTICS

- Cargo Pockets
- Cuff Snow Gaiter
- Inner Cargo Pockets
- Snow Gaiter with wide silicone gripper

## ERGONOMICS

- Fixed fully adjustable hood

## GENERAL TECHNICAL FEATURES

- 4 way stretch fabric
- Breathability 20.000 g/m2/24hrs
- Water column 20.000 mm
- YKK VISLON® AquaGuard® front zipper
- YKK® Waterproof Zippers

## MAIN MATERIALS

- Dermizax®EV stretchable membrane
- Goose Down (80/20 Down Insulation 750 Fill Power)

## FIT

- Short cut
- Standard


**W93**  
 FIRE-RED

**022**  
 NIGHT BLUE

**84I**  
 DUFFEL-BAG

**13M**  
 ELEPHANT SKIN

## ETRA AEROSENSE-DRY CORE READY JACKET

NEW



REPREVE

AERO  
SENSE  
DRY

### PART NUMBER

2047400036

### SIZES

XS - XXL

No compromise between protection and performance on this ski jacket from the new Dainese collection. Etra is made with innovative Aerosense-Dry membrane fabric (20,000mm/20,000g/m<sup>2</sup>/24h) with maximum performance in terms of waterproofing and breathability, combined with the warm 100% recycled REPREVE® padding. With a pocket designed for inserting the Core protector, Etra offers high standards of safety and comfort. Moreover, due to the stretch fabric, the jacket has an excellent fit, perfectly following all movements of the skier. The innovative materials are joined by technical details such as internal gaiter and at the cuffs, internal and external pockets and adjustable hood.



72M

STRETCH LIMO/GREEN FOUR



78M

BLUE NIGHT/BUNGEE BROWN



Y41

STRETCH-LIMO



90M

BUNGEE BROWN/STRETCH LIMO

READY FOR  
CORE BP

### OVERVIEW

- Ski jacket with waterproof and breathable Aerosense-Dry membrane and recycled REPREVE® padding, designed for inserting the Core protector.

### CHARACTERISTICS

- 1 inner pocket
- 2 front pockets
- Cuff Snow Gaiter
- Drawstring adjustable at bottom
- Fully seam sealed
- Inner Cargo Pockets
- Skipass pocket
- Removable snow skirt

### ERGONOMICS

- Fixed fully adjustable hood
- Strap cuff adjustments

### GENERAL TECHNICAL FEATURES

- Breathability 20.000 g/m<sup>2</sup>/24hrs
- Water column 20.000 mm

### FIT

- Athletic

### PROTECTION

- CORE Back Protector Pocket

42B

RACING-RED/BLACK

## ETESIA AEROSENSE-DRY JACKET

NEW

REPREVE®

AERO  
SENSE  
DRY

## PART NUMBER

2047400029

## SIZES

XS - XXL

Etesia is the technical jacket made with Aerosense-Dry external membrane (20,000mm/20,000g/m<sup>2</sup>/24h), a material with high performance in terms of waterproofing and breathability combined with soft REPREEVE® padding, environmentally friendly as it is made using recycled plastics. Warm, practical and ergonomic, Etesia is ideal for use both in the mountains and in the city. Equipped with front pockets, waterproof zippers, snow skirt with silicone bottom and adjustable hood.



022

NIGHTBLUE



Y41

STRETCH-LIMO



42A

RACING-RED



79M

GREEN FOUR



80M

BUNGEE BROWN

## OVERVIEW

- Waterproof and breathable ski jacket in Aerosense-Dry membrane fabric and REPREEVE® recycled padding. Versatile for use in the mountains and in the city.

## CHARACTERISTICS

- 2 front pockets
- Removable snow gaiter
- Inner Cargo Pockets

## ERGONOMICS

- Fixed fully adjustable hood
- Strap cuff adjustments

## GENERAL TECHNICAL FEATURES

- Breathability 20.000 g/m<sup>2</sup>/24hrs
- Embedded drawstring components
- Water column 20.000 mm

## FIT

- Athletic



**M001 D-DRY****PART NUMBER**

2047400004

**SIZES**

XS - XXL

Designed for skiers who have an all-out mountain experience, M001 D-DRY is the ski jacket with D-Dry® 2L waterproof membrane and equipped with the innovative Freudenberg Comfortemp® padding with Quick Dry Frame pattern, the revolutionary technology that controls and channels excess humidity ensuring a perfect feeling even in the most intense phases of activity. Equipped with a double front zipper, an adjustable hood and waist and a snow skirt. The large side air vents, which make it extremely light and breathable, and its very low thickness, which allows it to be stored easily in a backpack, mean that M001 D-DRY is also versatile for use in other outdoor activities in the mountains.



**Y41**  
STRETCH-LIMO



**801**  
CINNAMON

**OVERVIEW**

- Ski jacket with D-Dry® 2L membrane and Freudenberg Comfortemp® padding with Quick Dry Frame allowing the body to stay dry at all times. Versatile for use in other outdoor mountain activities.

**CHARACTERISTICS**

- 2 Big armpit air intakes
- Cuff Snow Gaiter
- Double puller front zip
- Drawstring adjustable at bottom
- Fully seam sealed
- Inner Cargo Pockets
- Skipass pocket
- Waterproof zippers

**ERGONOMICS**

- Fixed fully adjustable hood
- Strap cuff adjustments

**GENERAL TECHNICAL FEATURES**

- Breathability 10.000 g/m2/24hrs
- Front cargo pockets
- Smartphone dedicated pocket
- Water Column 10.000 mm

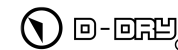
**MATERIALS**

- D-Dry® 2L Membrane
- Freudenberg Comfortemp® with Quickdry Frame® 60gr

**FIT**

- Relaxed

## M002 D-DRY



## PART NUMBER

2047400013

## SIZES

XS - XXL

With an extremely versatile look, M002 D-DRY is the jacket suited to both sports activities on the slopes and free time. Made with D-Dry® 2L waterproof membrane and padded with Thermore® Ecodown, M002 D-DRY ensures total protection even against the most unpredictable atmospheric agents. The versatility of the garment is combined with practicality through two large front pockets and an internal one dedicated to smartphones, the retractable hood and the option of adjusting the cuffs and waist for maximum comfort of movement, both on the slopes and in urban contexts.



**Y41**  
STRETCH-LIMO

## OVERVIEW

- Padded jacket with Thermore® Ecodown and equipped with D-Dry® 2L waterproof membrane, ideal for use on the slopes and in free time.

## CHARACTERISTICS

- 1 inner pocket
- 1 large front pocket
- 2 front pockets
- Cuff Snow Gaiter
- Double puller front zip
- Drawstring adjustable at bottom
- Fully seam sealed
- Reflective band to roll up the hood when not in use
- Waterproof zippers

## ERGONOMICS

- Fixed fully adjustable hood
- Strap cuff adjustments

## GENERAL TECHNICAL FEATURES

- Breathability 10.000 g/m2/24hrs
- Smartphone dedicated pocket
- Water Column 10.000 mm

## MAIN MATERIALS

- Thermore® Ecodown 100% Recycled

## MATERIALS

- D-Dry® 2L Membrane

## LENGTH

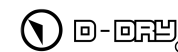
- Long

## FIT

- Relaxed



## M003 D-DRY



## PART NUMBER

2047400007

## SIZES

XS - XXL

M003 D-DRY is the jacket with 100% recycled Thermore® Ecodown padding and equipped with a waterproof and breathable D-Dry® 2L membrane. Designed for all-round use in the mountains. The double front zipper, the adjustable hood and waist and the dedicated smartphone pocket round out M003 D-DRY, making it extremely versatile, comfortable and practical.



**Y41**  
STRETCH-LIMO

## OVERVIEW

- Padded jacket with Thermore® Ecodown and equipped with D-Dry® 2L membrane, versatile for use both in the mountains and in the city.

## CHARACTERISTICS

- 2 front pockets
- Double puller front zip
- Drawstring adjustable at bottom
- Reflective band to roll up the hood when not in use

## ERGONOMICS

- Adjustable cuff strap
- Fixed fully adjustable hood

## GENERAL TECHNICAL FEATURES

- Breathability 10.000 g/m2/24hrs
- Smartphone pocket
- Water Column 10.000 mm

## MAIN MATERIALS

- Thermore® Ecodown 100% Recycled

## FIT

- Athletic
- Regular

## MATERIALS

- D-Dry® 2L Membrane







LIGHT DOWNJACKET

**PART NUMBER**  
2047400021

**SIZES**  
XS - XXXL

With padding in warm 550 fill power goose down, LIGHT DOWNJACKET is the versatile jacket that can be used for both sport activity and free time. Equipped with a fixed hood and two large front pockets.



**Y41**  
STRETCH-LIMO



**M92**  
CASTLE-ROCK



**F80**  
DEEP-LICHEN-GREEN

**OVERVIEW**

- Jacket with 550 fill power goose down padding. For sports and free time.

**CHARACTERISTICS**

- 2 pockets on front

**GENERAL TECHNICAL FEATURES**

- Fixed hood

**MATERIALS**

- 100% Nylon (Low-core)
- Duck down (80/20 Down Insulation 550 Fill Power)

**FIT**

- Regular

## ARIANTE DERMIZAX EV™ PANTS

NEW


**Dermizax EV**  
 Waterproof Breathable Fabric

## PART NUMBER

2047600016

## SIZES

XS - XXL

Ariante Dermizax EV™ are the ski pants made with waterproof and breathable high-performance membrane and PrimaLoft® Black padding.. Due to the Toray Dermizax®EV fabric (20,000mm/20,000g/m²/24h), which extends in four directions, these pants adapt perfectly to the body even on the most intense days of skiing, supporting skiers in showing off their full potential. Snow skirt with silicone insert, reinforcement on the bottom and ability to adjust the waist with Velcro complete the equipment on these ski pants designed for maximum performance on the slopes.



022

NIGHTBLUE



84I

DUFFEL-BAG



42A

RACING-RED



81M

ELEPHANT GREY



Y41

STRETCH-LIMO

## OVERVIEW

- Ski pants with waterproof and breathable Dermizax® EV membrane and PrimaLoft® Black padding.

## CHARACTERISTICS

- 2 pockets on front
- 2 Big thigh air intakes
- Ankle reinforcement
- Boot snow gaiter with silicon grippers
- Braces lock system
- Safe snap sliding button

## ERGONOMICS

- Adjustable waist straps

## GENERAL TECHNICAL FEATURES

- Breathability 20.000 g/m²/24h
- Water column 20.000 mm

## MAIN MATERIALS

- Dermizax®EV stretchable membrane
- PrimaLoft® Black insulation (60g/m2)

## FIT

- Athletic

## ONIRA AEROSENSE-DRY PANTS

NEW

REPREVE®

AERO  
SENSE  
DRY

## PART NUMBER

2047600015

## SIZES

XS - XXL

Technical ski pants made with Aerosense-Dry stretch outer membrane and REPREEVE® inner padding, made by recycling plastic materials. Extremely breathable and waterproof due to the properties of the high-performance Aerosense-Dry membrane fabric (20,000mm/20,000g/m²/24h), Onira pants offer skiers the highest levels of ergonomics and freedom of expression, accompanying movement even in the most demanding stages of skiing. Ready for use in all weather conditions, both on and off the slopes, this garment is equipped with reinforcement on the ankles, silicone snow gaiters, suspender compatibility with Dainese system and Velcro waist adjustment.



022

NIGHTBLUE



42A

RACING-RED



79M

GREEN FOUR



80M

BUNGEE BROWN



Y41

STRETCH-LIMO

## OVERVIEW

- Technical ski pants with Aerosense-Dry membrane and REPREEVE® recycled padding. Waterproof, breathable and ergonomic.

## CHARACTERISTICS

- 2 pockets on front
- Ankle reinforcement
- Boot snow gaiter with silicon grippers
- Braces lock system
- Safe snap sliding button

## ERGONOMICS

- Adjustable waist straps

## GENERAL TECHNICAL FEATURES

- Breathability 20.000 g/m²/24h
- Water column 20.000 mm

## FIT

- Athletic

**P003 D-DRY®****D-THERMO**  
INSULATION**D-DRY®****PART NUMBER**

2047600006

**SIZES**

XS - XXL

P003 D-DRY® ski pants are the perfect combination of comfort, thermal insulation, and maximum freedom of movement, not only on the slopes. With a comfortable and modern fit, P003 D-DRY® pants are built with D-Dry® 2L waterproof membrane and D-Thermo insulation for superior protection in all weather conditions. The pants are equipped with reinforcements on the ankles, which protect against potential abrasion caused by rubbing and cuts. The waist adjustment system allows you to maintain perfect fit in every phase of activity, ensuring maximum practicality and comfort of movement. The equipment is rounded out by the silicone snow skirt, two large front pockets and an extra side pocket.

**801**  
CINNAMON**841**  
DUFFEL-BAG**OVERVIEW**

- Ski pants in D-Dry® 2L waterproof membrane and D-Thermo insulation, for maximum protection in all weather conditions.

**GENERAL TECHNICAL FEATURES**

- Water Column 10.000 mm
- Breathability 10.000 g/m2/24hrs

**MATERIALS**

- D-Dry® 2L Membrane
- D-Thermo insulation

**CHARACTERISTICS**

- Boot snow gaiter with silicon grippers
- 2 pockets on front
- Extra pocket on the side
- Safe snap sliding button
- Ankle reinforcement
- Braces lock system

**ERGONOMICS**

- Adjustable waist straps

## SUSPENDERS

---

**PART NUMBER**

2049900004

**SIZES**

N

Ergonomic SUSPENDERS with adjustable elastic can be combined with all models of pants equipped with the Braces Lock System.

**OVERVIEW**

- Adjustable braces that can be combined with all pants with Braces Lock System.

**ERGONOMICS**

- Adjustable braces





## MEVO FULL ZIP MID

NEW

REPREVE

## PART NUMBER

2049400014

## SIZES

XS - XXL

A perfect combination of softness and thermal comfort due to its hybrid construction, Mevo is the technical mid-layer in the Dainese range made with stretch fabric and warm REPREVE® padding, a textile fiber produced with recycled plastics. The central full zipper and the two front pockets make this garment an ideal layer for all mountain sports.



70M

STRETCH LIMO/BLUE NIGHT



71M

STRETCH LIMO/RACING RED



Y41

STRETCH-LIMO

## OVERVIEW

- Technical mid-layer in stretch fabric and warm REPREVE® recycled material padding, ideal for mountain sports.

## CHARACTERISTICS

- 2 front pockets
- Front full zipper
- Hybrid construction

## FIT

- Regular

## ESPERA FULL ZIP MID

NEW

## PART NUMBER

2049400016

## SIZES

XS - XXL

Espera is the full-zipper technical mid-layer from the Dainese ski range made of soft stretch fabric. Warm, ergonomic and featuring a clean design, this garment can be used as an intermediate layer under the ski suit, to guarantee maximum thermal comfort for the body even at the lowest temperatures. Two side pockets complete the characteristics of this technical garment, ideal for mountain sports, in both winter and summer.



022

NIGHTBLUE



79M

GREEN FOUR



Y41

STRETCH-LIMO

## OVERVIEW

- Full-zipper mid-layer featuring clean design made of soft, warm, stretch fabric.

## CHARACTERISTICS

- 2 front pockets
- Front full zipper

## FIT

- Regular



## W001 HYBRID MID

### PART NUMBER

2049400001

### SIZES

XS - XXL

Made with double jersey fabric, W001 HYBRID MID is a warm, comfortable mid layer equipped with the revolutionary Freudenberg Comfortemp® padding with Quickdry Frame® 40 g, able to channel excess humidity and keep the body dry at all times. The functionality of W001 HYBRID MID lies in its hybrid design, which combines padded parts with stretch details, for maximum protection against atmospheric agents and complete freedom of movement. Using the rear pocket designed to accommodate the Dainese CORE back protector, the mid-layer can be transformed into a protector. The lower part of the mid layer and the sleeves in micro-perforated stretch fabric ensure ventilation and breathability during every phase of sport activity where they're needed.

### CHARACTERISTICS

- 2 pockets on front
- Front full zipper

### MATERIALS

- 100% Nylon (Low-core)
- Double knitted jersey
- Freudenberg Comfortemp® with Quickdry Frame® 40gr

### PROTECTION

- CORE Back Protector Pocket

### FIT

- Regular



READY FOR  
CORE BP



## W001 HYBRID VEST

### PART NUMBER

2049400006

### SIZES

XS - XXL

Made with double jersey fabric, W001 HYBRID VEST is a warm, comfortable mid layer equipped at the top with the revolutionary Freudenberg Comfortemp® padding with Quickdry Frame® 40 g, able to channel excess humidity and keep the body dry at all times. The innovative quality of the W001 HYBRID VEST lies in its hybrid design, as it can be transformed into a protector due to the back pocket that can accommodate the Dainese CORE back protector. The lower part of the mid layer and the sleeves are made of micro-perforated stretch fabric, to ensure ventilation and breathability during all phases of sport activity and maximum freedom of movement.



READY FOR  
CORE BP



931

SILVER-FILIGREE/CASTLE-ROCK

### OVERVIEW

- Mid layer in double jersey fabric and micro-perforated stretch fabric, featuring Freudenberg Comfortemp® padding with Quickdry Frame® 40 g. A hybrid garment, it can accommodate the Core back protector.

### CHARACTERISTICS

- 2 front pockets

### ERGONOMICS

- Front zipper

### MATERIALS

- 100% Nylon (Low-core)
- Double knitted jersey
- Freudenberg Comfortemp® with Quickdry Frame® 40gr

### PROTECTION

- CORE Back Protector Pocket

### FIT

- Regular

## THERMAL INNER JACKET

### PART NUMBER

2047400008

### SIZES

XS - XXL

THERMAL INNER JACKET is the technical jacket equipped with Freudenberg Comfortemp® padding with Quick Dry Frame®, the innovative technology that allows excess humidity to be channeled to keep the body dry at all times, in every phase of sport activity. This technology is complemented by stretch fabric inserts on the sides, for maximum freedom of movement and physical performance.



**M92**  
CASTLE-ROCK

### OVERVIEW

- Full-zip jacket with Freudenberg Comfortemp® padding with Quick Dry Frame® and stretch fabric inserts.

### CHARACTERISTICS

- 2 pockets on front
- Front full zipper
- Side stretch fabric inserts

### MATERIALS

- 100% Nylon (Low-core)
- Freudenberg Comfortemp® with Quickdry Frame® 100gr

### FIT

- Regular



### Y41

STRETCH-LIMO



## HP MID

### PART NUMBER

204910027

### SIZES

XS - XXL

HP MID is a thermal mid-layer with 3/4 zipper that offers a soft, comfortable fit. The special ribbed structure guarantees excellent perspiration management, keeping moisture in its channels and leaving the fabric in direct contact with the body dry. Garments in the HP collection are designed to offer maximum dexterity and freedom of movement on downhill slopes, as well as greater comfort and thermal insulation. Whatever the weather.

### GENERAL TECHNICAL FEATURES

- Front Half Zipper

### MATERIALS

- 100% Polyester

### FIT

- Standard



## W002 MID FULL ZIP

### PART NUMBER

2049400007

### SIZES

XS - XXL

W002 MID FULL ZIP is a mid layer made of 3D fabric with a ribbed structure, a material that ensures perfect control of perspiration and humidity to ensure that the body always stays dry even in the most intense phases of sport activity. The inserts on the sides are designed in soft stretch fabric, which contributes to the ventilation and breathability of the garment, combining unparalleled levels of freedom of movement with superior thermal comfort.



**Y41**  
STRETCH-LIMO

### CHARACTERISTICS

- 2 front pockets
- Front full zipper

### ERGONOMICS

- Inserts in stretch fabric

### MAIN MATERIALS

- 3d breathable fabric

### COMPOSITION - GARMENT PADDING

- 100% Polyester

### FIT

- Regular





**DRY LS MAN****PART NUMBER**

2049100020

**SIZES**

XS/S, M, L, XL/XXL

Dry LS is the men's long-sleeved base layer jersey ideal for use throughout the year and in the hottest season because of the construction in Dryarn hydrophobic fabric, a technology that optimizes the process of managing sweat and moisture, keeping the body dry at all times. Because of its superior level of breathability and the ability to remove sweat and moisture from the body, Dry LS is the ideal long-sleeved jersey for the hottest season, as it guarantees the utmost freshness and feeling of comfort even in the most intense moments of activity. The lack of seams allows for great comfort and mobility. Reinforcements on the most frequent contact areas guarantee the utmost comfort and durability for the garment.

**OVERVIEW**

- Men's long-sleeved jersey in Dryarn hydrophobic fabric, for maximum breathability and high comfort even during the hottest season.

**MAIN MATERIALS**

- 15% Polyamide
- 5% Elastane
- 80% Dryarn®

**FIT**

- Slim



## DRY PANTS MAN 3/4

## PART NUMBER

2049100024

## SIZES

XS/S, M, L, XL/XXL

Dry Pants ¾ are the undershorts made of Dryarn hydrophobic fabric, a technology that optimizes the sweat management process and keeps the body dry at all times. With medium-low insulating power and a high level of breathability, Dry Pants ¾ are also great for use in mild and higher temperatures. Maximum comfort is guaranteed by the absence of seams and reinforced padding on the contact areas.

## OVERVIEW

- 3/4 underwear in breathable Dryarn fabric. Keeps the body dry and ensures perfect thermoregulation in milder climates.

## MAIN MATERIALS

- 15% Polyamide
- 5% Elastane
- 80% Dryarn®

## FIT

- Slim





## THERMO LS MAN

## PART NUMBER

2049100021

## SIZES

XS/S, M, L, XL/XXL

Thermo LS is the long-sleeved thermal jersey suited to tackling the coldest temperatures in the utmost comfort. Comfort and confidence, for every activity when riding and when far from the bike. Made of Dryarn fabric, Thermo LS ensures great thermal comfort and excellent insulation. It's a fundamental layer for facing every challenge on the coldest of days. The great breathability and high insulating power allow you to contain the warm air of the body, maintaining high body temperature and making Thermo LS ideal for the colder season. Dryarn technology allows you to remove sweat and moisture from the skin, keeping your body temperature constant. Maximum comfort is guaranteed by the absence of seams and reinforced construction on the contact areas. The Thermo LS insulating jersey maintains the ideal temperature even in the coldest outdoor temperatures.

## OVERVIEW

- Men's long-sleeved thermal jersey in breathable and insulating Dryarn fabric, maintains body temperature and keeps body dry at the most extreme temperatures.

## MAIN MATERIALS

- 10% Polyamide
- 5% Elastane
- 85% Dryarn®

## FIT

- Slim



## THERMO PANTS 3/4

## PART NUMBER

2049100004

## SIZES

XS/S, M, L, XL/XXL

Thermo Pants are the men's thermal pants to be worn under the normal ones, suited to tackling the coldest temperatures in the utmost comfort. Comfort and confidence, for every activity when riding and when far from the bike. Made of Dryarn fabric, Thermo Pants ensure great thermal comfort and excellent insulation. It's a fundamental layer for facing every challenge on the coldest of days. The great breathability and high insulating power allow you to contain the warm air of the body, maintaining high body temperature and making Thermo Pants ideal for the colder season. Dryarn technology allows you to remove sweat and moisture from the skin, keeping your body temperature constant. Maximum comfort is guaranteed by the absence of seams and reinforced construction on the contact areas. Insulating Thermo Pants maintain the ideal body temperature even with the coldest outdoor temperatures.

## OVERVIEW

- Men's thermal pants in breathable and insulating Dryarn fabric. They maintain body temperature and keep the body dry at the most extreme temperatures.

## MAIN MATERIALS

- 10% Polyamide
- 5% Elastane
- 85% Dryarn®

## FIT

- Slim



**DRY LONG SOCKS****PART NUMBER**

2049100026

**SIZES**

36-38, 39-41, 42-44, 45-47

Dry Long Socks are the long version of Dainese Dry, breathable socks designed to ensure ergonomics and appropriate thermoregulation in milder climates. The Dryarn hydrophobic fabric allows Dry Socks to optimize the sweat management process, keeping the body dry at all times and ensuring freshness and comfort.

**OVERVIEW**

- Long socks made of breathable and hydrophobic material, ideal for mild and high temperatures.



**THERMO LONG SOCKS****PART NUMBER**

2049100025

**SIZES**

36-38, 39-41, 42-44, 45-47

Thermo Long Socks are the long version of Dainese Thermo insulating socks, designed to ensure ergonomics and appropriate thermoregulation in colder climates. The Dryarn hydrophobic and insulating fabric allows Thermo Socks to optimize the process of managing body heat.

**OVERVIEW**

- Long socks made of thermal material, perfect for low temperatures.

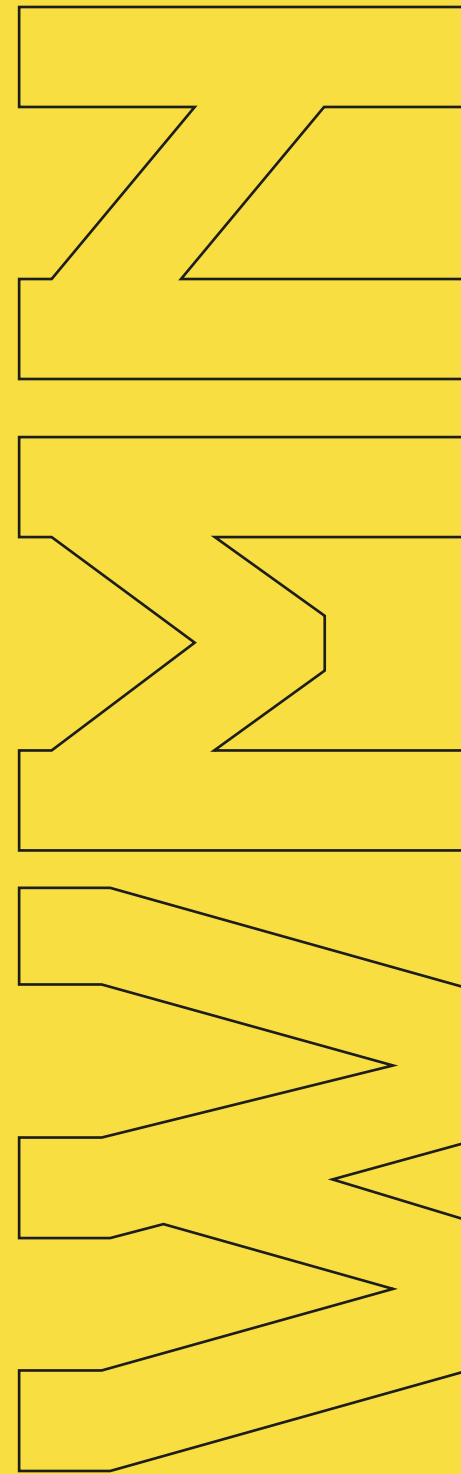






Freedom of movement and thermal  
comfort to face every slope,  
any winter activity.

Design and ergonomics meet protection and style  
to make the most of the heights,  
feeling free and protected,  
in all weather conditions.





# ALVEA DERMIZAX EV™ WMN CORE READY JACKET

NEW


**Dermizax EV**  
 Waterproof Breathable Fabric

**PART NUMBER**  
 2047400035

**SIZES**  
 XS - XXL

Alvea Dermizax EV™ WMN Core Ready is the ski jacket designed for every woman looking for maximum performance from a technical garment for days on the slopes. A jacket with a linear design, it is made using Dermizax®EV membrane fabric (20,000mm/20,000g/m²/24h), waterproof and breathable with a high level of four-way stretch, a property that gives the jacket a comfortable fit, allowing skiers to show off their full potential. The outer shell is combined with warm, soft PrimaLoft®Black padding, known as a lightweight, compressible and highly efficient thermal insulation solution. Equipped with a pocket designed for inserting the Core protector, the jacket has fully taped seams, waterproof zipper, internal snow skirt with silicone bottom, internal and external pockets and adjustable hood, for maximum practicality.


**READY FOR  
CORE BP**

**42A**  
 RACING-RED

**77M**  
 STONE BLUE/BLUE NIGHT

**81B**  
 LILY-WHITE/STRETCH-LIMO

**82M**  
 STONE BLUE

## OVERVIEW

- Women's ski jacket with waterproof and breathable Dermizax® EV membrane and warm PrimaLoft® Black padding, designed for inserting the Core protector.

## CHARACTERISTICS

- 1 inner pocket
- 2 front pockets
- Cuff Snow Gaiter
- Drawstring adjustable at bottom
- Fully seam sealed
- Inner Cargo Pockets
- Skipass pocket
- Removable snow skirt
- Waterproof zippers

## ERGONOMICS

- Fully adjustable fitted hood
- Strap cuff adjustments

## GENERAL TECHNICAL FEATURES

- Breathability 20.000 g/m2/24hrs
- Water column 20.000 mm

## MAIN MATERIALS

- Dermizax®EV stretchable membrane
- PrimaLoft® Black insulation (80g/m2 core - 60g/m2 sleeves)

## FIT

- Athletic

## PROTECTION

- CORE Back Protector Pocket



## VIRTUS DERMIZAX EV™ WMN JACKET

NEW


**Dermizax EV**  
 Waterproof Breathable Fabric

## PART NUMBER

2047400039

## SIZES

XS - XXL

A waterproof technical down jacket with Dermizax®EV exterior (20,000mm/20,000g/m²/24h) and soft real down padding, designed for skiers looking for a technical down jacket with the guaranteed waterproofing and breathability offered by Dermizax® EV membrane fabric. Designed for the most demanding skiers who don't want to compromise between performance and design. Virtus Dermizax EV™WMN is a versatile solution that guarantees excellent fit and great freedom of movement due to the extreme flexibility of the four-way stretch fabric. Ergonomics combine with practicality, provided by internal and external pockets, waterproof zipper and snow gaiter with silicone bottom inside the sleeve.


**42A**  
 RACING-RED

**Y41**  
 STRETCH-LIMO

**81B**  
 LILY-WHITE/STRETCH-LIMO

**81M**  
 ELEPHANT GREY

**82M**  
 STONE BLUE

## OVERVIEW

- Women's waterproof technical down jacket with Dermizax® EV membrane and real goose down padding.

## CHARACTERISTICS

- 1 inner pocket
- 2 front pockets
- Cuff Snow Gaiter
- Inner Cargo Pockets
- Snow Gaiter with wide silicone gripper
- Waterproof zippers

## GENERAL TECHNICAL FEATURES

- Breathability 20.000 g/m2/24hrs
- Water column 20.000 mm

## MAIN MATERIALS

- Dermizax®EV stretchable membrane

## FIT

- Athletic

## MATERIALS

- Duck down (80/20 Down Insulation 550 Fill Power)

## ZIVES AEROSENSE-DRY WMN JACKET

NEW

REPREVE®

AERO  
SENSE  
DRY

## PART NUMBER

2047400037

## SIZES

XS - XXL

Women's padded jacket with waterproof and breathable Aerosense-Dry outer shell (20,000mm/20,000g/m<sup>2</sup>/24h), combined with the innovative REPREVE® recycled padding, a material that results from processing recycled plastics to form an excellent insulating layer. The combination of these two materials ensures that the body always remains warm and dry, even in adverse weather conditions. Thermal comfort is combined with the extreme comfort of this technical garment with stretch fabric, which accompanies skiers' movements guaranteeing maximum freedom on the slopes. Details such as snow skirt with silicone bottom, ability to adjust the cuffs, waterproof zippers and comfortable internal and external pockets complete the equipment on Zives Aerosense-Dry WMN.

022  
NIGHTBLUE73M  
LILY WHITE/RACING REDY41  
STRETCH-LIMO77M  
STONE BLUE/BLUE NIGHT81B  
LILY-WHITE/STRETCH-LIMO88M  
LILY WHITE/EMPIRE YELLOW

## OVERVIEW

- Women's padded jacket with waterproof and breathable Aerosense-Dry stretch outer shell combined with REPREVE® recycled padding.

## CHARACTERISTICS

- 1 inner pocket
- 2 front pockets
- Removable snow gaiter
- Cuff Snow Gaiter
- Drawstring adjustable at bottom
- Fully seam sealed
- Inner Cargo Pockets
- Skipass pocket
- Snow gaiter with silicone grippers

## ERGONOMICS

- Fixed fully adjustable hood
- Strap cuff adjustments

## GENERAL TECHNICAL FEATURES

- Breathability 20.000 g/m<sup>2</sup>/24hrs
- Water column 20.000 mm

## FIT

- Athletic

## NOVA AEROSENSE-DRY WMN JACKET

NEW

REPREVE

AERO  
SENSE  
DRY

## PART NUMBER

2047400040

## SIZES

XS - XXL

Nova is the women's padded jacket with a sinuous cut and refined design. Built with waterproof and breathable Aerosense-Dry outer membrane (20,000mm/20,000g/m<sup>2</sup>/24h) and warm REPREVE® inner padding, a textile fiber produced using recycled plastics. This jacket is designed for those who want to experience the mountains in all weather conditions. Warm, practical and ergonomic, Nova has waterproof zippers, adjustable hood and silicone snow gaiters at the waist and inside the sleeve.

022  
NIGHTBLUE17H  
YELLOW-EMPIREY41  
STRETCH-LIMO42A  
RACING-RED82M  
STONE BLUE88B  
LILY-WHITE

## OVERVIEW

- Women's ski jacket with waterproof and breathable Aerosense-Dry membrane fabric and REPREVE® recycled padding. Warm, ergonomic and featuring a refined design.

## CHARACTERISTICS

- Cuff Snow Gaiter
- Inner Cargo Pockets
- Removable snow skirt
- Waterproof zippers

## ERGONOMICS

- Fully adjustable fitted hood

## GENERAL TECHNICAL FEATURES

- Breathability 20.000 g/m<sup>2</sup>/24hrs
- Water column 20.000 mm

## FIT

- Athletic

## LIGHT DOWNJACKET WMN

## PART NUMBER

2047400023

## SIZES

XS - XXL

With padding in warm 550 fill power goose down, LIGHT DOWNJACKET is the versatile jacket that can be used for both sport activity and free time. Equipped with a fixed hood and two large front pockets.

**F80**  
DEEP-LICHEN-GREEN

## OVERVIEW

- Jacket with 550 fill power goose down padding. For sports and free time.

## CHARACTERISTICS

- 2 pockets on front

## GENERAL TECHNICAL FEATURES

- Fixed hood

## MATERIALS

- 100% Nylon (Low-core)
- Duck down (80/20 Down Insulation 550 Fill Power)

## FIT

- Regular





## LIGERA DERMIZAX EV™ WMN PANTS

NEW


**Dermizax EV**  
 Waterproof Breathable Fabric

## PART NUMBER

2047600018

## SIZES

XS - XXL

Ligera are the women's ski pants in the Dermizax EV™ range, equipped with waterproof and breathable high-performance membrane combined with soft PrimaLoft® Black padding. The combination of the two materials ensures extreme thermal comfort even in rain or snow, keeping the body warm and dry at all times. Due to the Toray Dermizax®EV fabric (20,000mm/20,000g/m²/24h), which extends in four directions, these pants adapt perfectly to the body even on the most intense days of skiing, supporting skiers in showing off their full potential. With a clean design, Ligera are equipped with a snow gaiter with silicone insert, reinforcement on the ankle and the ability to adjust with Velcro at the hips, features that make them extremely comfortable and practical.


**42A**  
 RACING-RED

**82M**  
 STONE BLUE

**88B**  
 LILY-WHITE

**022**  
 NIGHTBLUE

**Y41**  
 STRETCH-LIMO

## OVERVIEW

- Women's ski pants with waterproof and breathable Dermizax® EV membrane and PrimaLoft® Black padding. Featuring an ergonomic and clean design.

## CHARACTERISTICS

- 2 pockets on front
- Ankle reinforcement
- Boot snow gaiter with silicon grippers
- Braces lock system
- Safe snap sliding button

## ERGONOMICS

- Adjustable waist straps

## GENERAL TECHNICAL FEATURES

- Breathability 20.000 g/m²/24h
- Water column 20.000 mm

## MAIN MATERIALS

- Dermizax®EV stretchable membrane
- PrimaLoft® Black insulation (60g/m2)

## FIT

- Athletic

## OPRA AEROSENSE-DRY WMN PANTS

NEW

REPREVE®

AERO  
SENSE  
DRY

## PART NUMBER

2047600019

## SIZES

XS - XXL

Technical ski pants in Aerosense-Dry membrane fabric (20,000mm/20,000g/m<sup>2</sup>/24h), a material that offers very high levels of breathability and water resistance, combined with innovative REPREVE® recycled padding. Flexible and ergonomic due to the properties of the Aerosense-Dry fabric, Opra WMN are the ideal ally for enjoying the mountain in all weather conditions, keeping the body warm and dry at all times. Designed for skiers looking for comfort and style, but who don't compromise on maximum performance, Opra WMN are equipped with reinforcement on the bottom, suspender compatibility with Dainese system, waist adjustment and side zippers on the bottom.



022

NIGHTBLUE

17H  
YELLOW-EMPIRE001  
BLACK42A  
RACING-RED82M  
STONE BLUE88B  
LILY-WHITE

## OVERVIEW

- Women's ski pants with Aerosense-Dry membrane and REPREVE® recycled padding. Waterproof, breathable and ergonomic.

## CHARACTERISTICS

- 2 pockets on front
- Ankle reinforcement
- Boot snow gaiter with silicon grippers
- Braces lock system
- Safe snap sliding button

## ERGONOMICS

- Adjustable waist straps

## GENERAL TECHNICAL FEATURES

- Breathability 20.000 g/m<sup>2</sup>/24h
- Water column 20.000 mm

## FIT

- Athletic



## EIRA SOFTSHELL WMN PANTS

NEW



## PART NUMBER

2047600017

## SIZES

XS - XXL

Women's ski pants in soft thermal softshell, a material that keeps the body warm at all times. With an athletic fit, Eira are equipped with a silicone snow gaiter, reinforcement and zipper on the bottom and adjustment at the waist. Ready to be used in all weather conditions, these pants can be combined with all the ski jackets in the Dainese range and are ideal for those who love skiing or living days in the mountains in complete freedom.



**022**  
NIGHTBLUE



**88B**  
LILY-WHITE



**Y41**  
STRETCH-LIMO

## OVERVIEW

- Women's ski pants in warm, soft thermal softshell, which can be combined with all Dainese jackets.

## CHARACTERISTICS

- 2 pockets on front
- Boot snow gaiter with silicon grippers
- Safe snap sliding button

## ERGONOMICS

- Adjustable waist straps

## MAIN MATERIALS

- Thermal Soft Shell

## FIT

- Athletic



## MEVO FULL ZIP WMN MID

NEW

REPREVE

## PART NUMBER

2049400017

## SIZES

XS - XXL

A perfect combination of softness and thermal comfort due to its hybrid construction, Mevo is the women's technical mid-layer made with stretch fabric and warm REPREVE® padding, a textile fiber produced with recycled plastics. The central full zipper and the two front pockets make this garment an ideal layer for all mountain sports.



**Y41**  
STRETCH-LIMO

## OVERVIEW

- Women's technical mid-layer in stretch fabric and warm REPREVE® recycled material padding, ideal for mountain sports.

## CHARACTERISTICS

- 2 front pockets
- Front full zipper
- Hybrid construction

## FIT

- Regular



91B

STRETCH-LIMO/LILY-WHITE

## ESPERA FULL ZIP WMN MID

NEW

## PART NUMBER

2049400019

## SIZES

XS - XXL

Espera is the women's full-zipper technical mid-layer from the Dainese ski range made of soft stretch fabric. Warm, ergonomic and featuring a clean design, this garment can be used as an intermediate layer under the ski suit, to guarantee maximum thermal comfort for the body even at the lowest temperatures. Two side pockets complete the characteristics of this technical garment, ideal for mountain sports, in both winter and summer.



**88B**  
LILY-WHITE



**Y41**  
STRETCH-LIMO

## OVERVIEW

- Women's full-zipper mid-layer featuring clean design made of soft, warm, stretch fabric.

## CHARACTERISTICS

- 2 front pockets
- Front full zipper

## FIT

- Regular





## W001 HYBRID MID WMN

### PART NUMBER

2049400003

### SIZES

XS - XXL

Made with double jersey fabric, W001 HYBRID MID WMN is a warm, comfortable mid layer equipped with the revolutionary Freudenberg Comfortemp® padding with Quickdry Frame® 40 g, able to channel excess humidity and keep the body dry at all times. The innovative quality of W001 HYBRID MID WMN lies in its hybrid design, which couples padded parts with breathable stretch fabric, for maximum thermal comfort and freedom of movement. It can be integrated with the Dainese CORE back protector using the compatible rear pocket. The lower part of the mid layer and the sleeves are made with micro-perforated stretch fabric, to ensure ventilation and breathability during all phases of sport activity and maximum freedom of movement.



READY FOR  
CORE BP

### OVERVIEW

- Women's mid layer in double jersey fabric and micro-perforated stretch fabric, featuring Freudenberg Comfortemp® padding with Quickdry Frame® 40 g. It can accommodate the Dainese CORE back protector.

### CHARACTERISTICS

- 2 pockets on front
- Front full zipper

### MATERIALS

- 100% Nylon (Low-core)
- Double knitted jersey
- Freudenberg Comfortemp® with Quickdry Frame® 40gr

### PROTECTION

- CORE Back Protector Pocket

### FIT

- Regular

## HP MID WMN

**PART NUMBER**

204910028

**SIZES**

XS - XL

HP MID is a thermal mid-layer for women with a soft, comfortable fit and a full-length zipper opening. The special ribbed structure guarantees excellent perspiration management, keeping moisture in its channels and leaving the fabric in direct contact with the body dry. Garments in the HP collection are designed to offer maximum dexterity and freedom of movement on downhill slopes, as well as greater comfort and thermal insulation. Whatever the weather.

**OVERVIEW**

- Women's thermal mid-layer with zipper opening and a ribbed structure to effectively disperse any excess moisture.

**CHARACTERISTICS**

- Front full zipper

**MATERIALS**

- 100% Polyester

**FIT**

- Athletic



## DRY LS WMN

## PART NUMBER

2049100022

## SIZES

XS/S - L/XL

Dry LS Lady is the women's long-sleeved base layer jersey ideal for use throughout the year and in the hottest season because of the construction in Dryarn hydrophobic fabric, a technology that optimizes the process of managing sweat and moisture, keeping the body dry at all times. Because of its superior level of breathability and the ability to remove sweat and moisture from the body, Dry LS is the ideal long-sleeved jersey for the hottest season, as it guarantees the utmost freshness and feeling of comfort even in the most intense moments of activity. The lack of seams allows for great comfort and mobility. Reinforcements on the most frequent contact areas guarantee the utmost comfort and durability for the garment.

## OVERVIEW

- Women's long-sleeved jersey in Dryarn hydrophobic fabric, for maximum breathability and high comfort even during the hottest season.

## MAIN MATERIALS

- 15% Polyamide
- 5% Elastane
- 80% Dryarn®

## FIT

- Slim





## DRY PANTS WMN 3/4

## PART NUMBER

2049100006

## SIZES

XS/S - L/XL

Dry Pants Lady are the women's base layer pants ideal for use throughout the year and in the hottest season because of the construction in Dryarn hydrophobic fabric, a technology that optimizes the process of managing sweat and moisture, keeping the body dry at all times. With their superior level of breathability and the ability to remove sweat and moisture from the body, Dry Pants are perfect for the hottest season, ensuring the utmost freshness and feeling of comfort even in the most intense moments of activity. The lack of seams allows for great comfort and mobility. Reinforcements on the most frequent contact areas guarantee the utmost comfort and durability for the garment.

## OVERVIEW

- Women's base layer pants in Dryarn hydrophobic fabric, for maximum breathability and high comfort even during the hottest season.

## MAIN MATERIALS

- 15% Polyamide
- 5% Elastane
- 80% Dryarn®

## FIT

- Slim



## THERMO LS WMN

## PART NUMBER

2049100023

## SIZES

XS/S - L/XL

Thermo LS is the women's long-sleeved thermal jersey suited to tackling the coldest temperatures in the utmost comfort. Comfort and confidence, for every activity when riding and when far from the bike. Made of Dryarn fabric, Thermo LS ensures great thermal comfort and excellent insulation. It's a fundamental layer for facing every challenge on the coldest of days. The great breathability and high insulating power allow you to contain the warm air of the body, maintaining high body temperature and making Thermo LS ideal for the colder season. Dryarn technology allows you to remove sweat and moisture from the skin, keeping your body temperature constant. Maximum comfort is guaranteed by the absence of seams and reinforced construction on the contact areas. The Thermo LS insulating jersey maintains the ideal temperature even in the coldest outdoor temperatures.

## OVERVIEW

- Women's long-sleeved thermal jersey in breathable and insulating Dryarn fabric, maintains body temperature and keeps body dry at the most extreme temperatures.

## MAIN MATERIALS

- 10% Polyamide
- 5% Elastane
- 85% Dryarn®

## FIT

- Slim



**THERMO PANTS WMN 3/4****PART NUMBER**

2049100008

**SIZES**

XS/S - L/XL

Thermo Pants Lady are the women's thermal pants to be worn under the normal ones, suited to tackling the coldest temperatures in the utmost comfort. Comfort and confidence, for every activity when riding and when far from the bike. Made of Dryarn fabric, Thermo Pants Lady ensure great thermal comfort and excellent insulation. It's a fundamental layer for facing every challenge on the coldest of days. The great breathability and high insulating power allow you to contain the warm air of the body, maintaining high body temperature and making Thermo Pants ideal for the colder season. Dryarn technology allows you to remove sweat and moisture from the skin, keeping your body temperature constant. Maximum comfort is guaranteed by the absence of seams and reinforced construction on the contact areas. Insulating Thermo Pants maintain the ideal body temperature even with the coldest outdoor temperatures.

**OVERVIEW**

- Women's thermal pants in breathable and insulating Dryarn fabric. They maintain body temperature and keep the body dry at the most extreme temperatures.

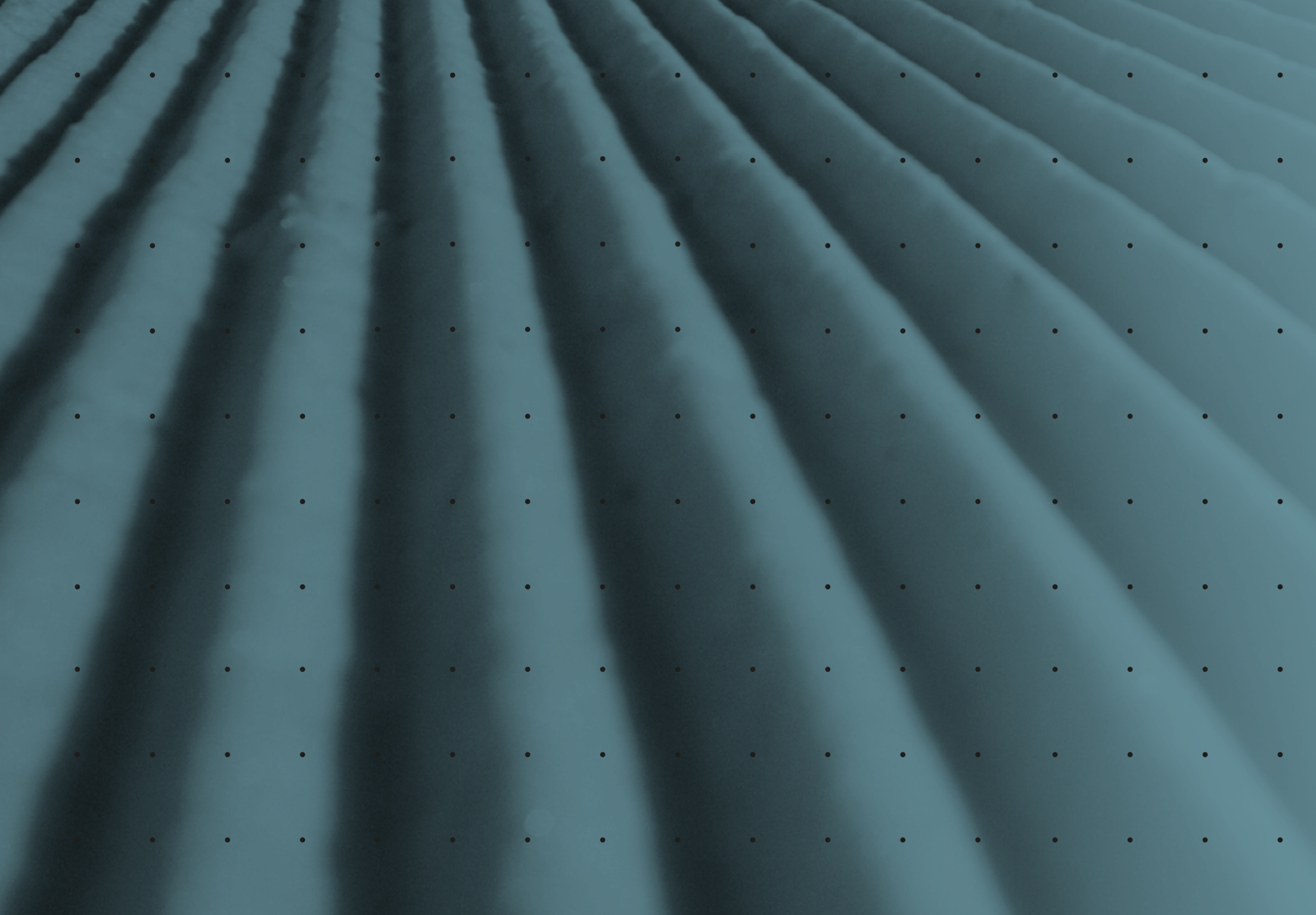
**MAIN MATERIALS**

- 10% Polyamide
- 5% Elastane
- 85% Dryarn®

**FIT**

- Slim

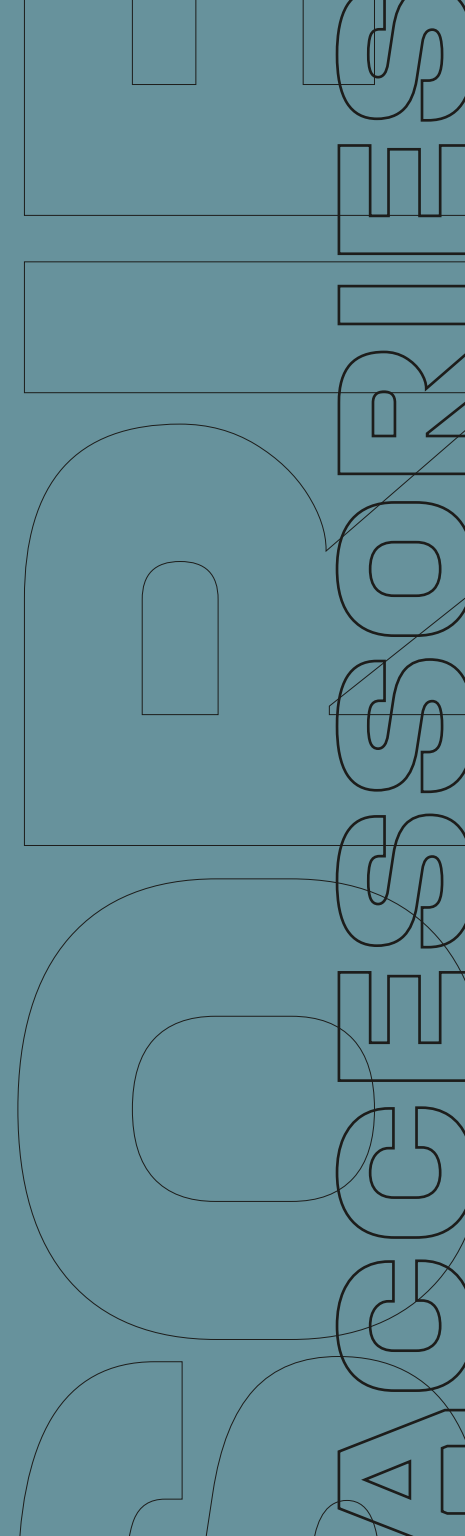






The protection of Alpine Ski World Cup champions.

Dainese invented protection for dynamic sports and develops it tirelessly, to give every skier and athlete the utmost safety in achieving ever more ambitious goals.



## D-AIR SKI 2 MAN

NEW



## PART NUMBER

204D300007

## SIZES

XS - XXXL

The most cutting-edge ski protection system ever. Invisible, lightweight and ergonomic, Dainese D-air® Ski 2 is the most advanced electronic airbag system designed to protect professional skiers as well as Downhill and Super-G athletes. Imperceptible until activated, only when needed. Dainese D-air® Ski 2 offers the highest level of freedom and protection, for maximum performance on every descent and in the most extreme racing conditions. Dainese D-air® Ski 2 is the intelligent protection system used by Downhill and Super-G World Cup athletes. Owing to the synergetic interaction of accelerometers, gyroscopes and GPS – and to its sophisticated algorithm, developed over 20 years of experience in the most extreme environments – the electronic airbag system recognizes the dynamics of a fall and activates the Shield, an airbag with patented microfilament technology that ensures even protection over the athletes' entire chest area. Dainese D-air® Ski 2 airbag systems can activate up to three times before airbag replacement. The innovative D-air® FRS (Fast Replacement System) also allows wearers to replace the gas generator on their own after activation, which allows to quickly get back on the slope. Comfort and maximum protection over the back area are ensured by the back protector, which is comfortable and lightweight when worn, owing to its unique composition. The lightweight construction of D-air® Ski 2 offers maximum freedom of movement due to its ergonomic fit: The joint of the back protector's lower plates allows it to adapt to the athlete's body, so that it follows skiers' movements without hindrance and without creating any annoying bulk. PLEASE NOTE: D-air® SKI was developed exclusively for Super G and Downhill competitions. It is not designed or intended for use in non-competitive skiing or other competitive disciplines. We recommend the purchase of this product only to members of a recognized Ski Club or Ski Federation. If you are a registered athlete, you may be eligible for our racing program. Please contact us through our Contact Us form for further information. PLEASE NOTE: D-AIR® PRODUCTS CANNOT BE RETURNED. Click here for further information

## OVERVIEW

- D-air® Ski 2 is the most advanced electronic airbag system designed to protect World Cup, Downhill and Super-G athletes.

## GENERAL TECHNICAL FEATURES

- Adjustable waistband
- Available in women specific fit
- Front zipper
- Led interface
- Pyrotechnic inflation
- Wireless Activation System

## MATERIALS

- 100% Polyester (bag)
- Polypropylene back plates

## SAFETY

- BACK

## HOMOLOGATION

- CE EN 1621.2 Level 2
- FIS APPROVED





## D-AIR SKI 2 WOMAN

NEW



## PART NUMBER

204D300008

## SIZES

XS - XL

The most cutting-edge ski protection system ever. Invisible, lightweight and ergonomic, Dainese D-air® Ski 2 is the most advanced electronic airbag system designed to protect professional skiers as well as Downhill and Super-G athletes. Imperceptible until activated, only when needed. Dainese D-air® Ski 2 offers the highest level of freedom and protection, for maximum performance on every descent and in the most extreme racing conditions. Dainese D-air® Ski 2 is the intelligent protection system used by Downhill and Super-G World Cup athletes. Owing to the synergetic interaction of accelerometers, gyroscopes and GPS – and to its sophisticated algorithm, developed over 20 years of experience in the most extreme environments – the electronic airbag system recognizes the dynamics of a fall and activates the Shield, an airbag with patented microfilament technology that ensures even protection over the athletes' entire chest area. Dainese D-air® Ski 2 airbag systems can activate up to three times before airbag replacement. The innovative D-air® FRS (Fast Replacement System) also allows wearers to replace the gas generator on their own after activation, which allows to quickly get back on the slope. Comfort and maximum protection over the back area are ensured by the back protector, which is comfortable and lightweight when worn, owing to its unique composition. The lightweight construction of D-air® Ski 2 offers maximum freedom of movement due to its ergonomic fit: The joint of the back protector's lower plates allows it to adapt to the athlete's body, so that it follows skiers' movements without hindrance and without creating any annoying bulk. PLEASE NOTE: D-air® SKI was developed exclusively for Super G and Downhill competitions. It is not designed or intended for use in non-competitive skiing or other competitive disciplines. We recommend the purchase of this product only to members of a recognized Ski Club or Ski Federation. If you are a registered athlete, you may be eligible for our racing program. Please contact us through our Contact Us form for further information. PLEASE NOTE: D-AIR® PRODUCTS CANNOT BE RETURNED. Click here for further information

## OVERVIEW

- D-air® Ski 2 is the most advanced electronic airbag system designed to protect World Cup, Downhill and Super-G athletes.

## GENERAL TECHNICAL FEATURES

- Adjustable waistband
- Front zipper
- Led interface
- Pyrotechnic inflation
- Wireless Activation System

## MATERIALS

- 100% Polyester (bag)
- Polypropylene back plates

## SAFETY

- BACK

## HOMOLOGATION

- CE EN 1621.2 Level 2
- FIS APPROVED



## D-AIR SKI 2 MAN SHIELD REPLACEMENT

NEW



## PART NUMBER

204D300009

## SIZES

2



## GENERAL TECHNICAL FEATURES

- Adjustable waistband
- Front zipper
- Pyrotechnic inflation
- Wireless Activation System

## MATERIALS

- 100% Polyester (bag)
- Polypropylene back plates

## SAFETY

- BACK

## HOMOLOGATION

- CE EN 1621.2 Level 1
- FIS APPROVED

## D-AIR SKI 2 WOMAN SHIELD REPLACEMENT

NEW



## PART NUMBER

204D300010

## SIZES

1



## GENERAL TECHNICAL FEATURES

- Adjustable waistband
- Front zipper
- Pyrotechnic inflation
- Wireless Activation System

## MATERIALS

- 100% Polyester (bag)
- Polypropylene back plates

## SAFETY

- BACK

## HOMOLOGATION

- CE EN 1621.2 Level 1
- FIS APPROVED

## D-AIR SKI 2 GENERATOR REPLACEMENT

NEW



### PART NUMBER

204D300011

### SIZES

N



001  
BLACK



## FLEXAGON WAISTCOAT 2 MAN


 ADJUSTABLE  
WAIST BAND


## PART NUMBER

2048700003

## SIZES

XS - XXXL

Flexagon redefines the standard of protective comfort with its innovative construction technology. The new version was restyled with a brand new fabric, capable to provide the skier with an unnoticed comfort to the touch and to breathe better than the previous fabric. The exceptional flexibility is aided by overlapping layers of Crash Absorb® memory foam that move independently of one another, and follow the anatomy of the body. Its ergonomic pattern of hexagon shaped soft pads provide comfort and maximum freedom of movement (6 sides, mobility on the 30°, 90° and 150° axes) along with effective protection.



47L

STRETCH LIMO/CASTLE ROCK



001

BLACK

## GENERAL TECHNICAL FEATURES

- Adjustable waistband
- Chest Pads

## COMPOSITION - INTERLINING FABRIC

- 100% Polyester

## COMPOSITION - OUTER GARMENT

- 19% Elastane
- 81% Nylon

## MATERIALS

- Carezza soft touch fabric
- Crash Absorb soft memory foam

## HOMOLOGATION

- CE EN 1621.1 Lev 2

## PROTECTION

- Flexagon Technology back protector

## FIT

- Regular

931

SILVER-FILIGREE/CASTLE-ROCK

## FLEXAGON BACK PROTECTOR 2 MAN


 ADJUSTABLE  
WAIST BAND


## PART NUMBER

2048700004

## SIZES

XS - XXXL

Flexagon redefines the standard of protective comfort with its innovative construction technology. The exceptional flexibility is aided by overlapping layers of Crash Absorb® memory foam that move independently of one another, and follow the anatomy of the body. Its ergonomic pattern of hexagon shaped soft pads provide comfort and maximum freedom of movement (6 sides, mobility on the 30°, 90° and 150° axes) along with effective protection.



## OVERVIEW

- The Dainese Flexagon ski back protector redefines the standards of protective comfort.

## ERGONOMICS

- Adjustable waist band

## GENERAL TECHNICAL FEATURES

- Adjustable shoulder straps

## MAIN MATERIALS

- Crash Absorb soft memory foam

## SAFETY

- BACK

## PROTECTION

- Flexagon Technology back protector



## FLEXAGON WAISTCOAT 2 WMN


 ADJUSTABLE  
WAIST BAND


## PART NUMBER

2048700005

## SIZES

XS - XXL

Flexagon redefines the standard of protective comfort with its innovative construction technology. The new version was restyled with a brand new fabric, capable to provide the skier with an unnoticed comfort to the touch and to breathe better than the previous fabric. The exceptional flexibility is aided by overlapping layers of Crash Absorb® memory foam that move independently of one another, and follow the anatomy of the body. Its ergonomic pattern of hexagon shaped soft pads provide comfort and maximum freedom of movement (6 sides, mobility on the 30°, 90° and 150° axes) along with effective protection.



49L

SILVER FILIGREE/STRETCH LIMO



47L

STRETCH LIMO/CASTLE ROCK

## OVERVIEW

- Certified Back Protector with the iconic Flexagon design, that ensure exceptional flexibility and impact resistance.

## GENERAL TECHNICAL FEATURES

- Adjustable waistband
- Chest Pads

## COMPOSITION - INTERLINING FABRIC

- 100% Polyester

## COMPOSITION - OUTER GARMENT

- 19% Elastane
- 81% Nylon

## MATERIALS

- Carezza soft touch fabric
- Crash Absorb soft memory foam

## HOMOLOGATION

- CE EN 1621.2 Level 2

## PROTECTION

- Flexagon Technology back protector

## LENGTH

- Regular

## FLEXAGON BACK PROTECTOR 2 WMN

◀ ADJUSTABLE  
WAIST BAND ▶



### PART NUMBER

2048700006

### SIZES

XS - XXL

Flexagon redefines the standard of protective comfort with its innovative construction technology. The exceptional flexibility is aided by overlapping layers of Crash Absorb® memory foam that move independently of one another, and follow the anatomy of the body. Its ergonomic pattern of hexagon shaped soft pads provide comfort and maximum freedom of movement (6 sides, mobility on the 30°, 90° and 150° axes) along with effective protection.



### OVERVIEW

- The Dainese Flexagon ski back protector redefines the standards of protective comfort.

### ERGONOMICS

- Adjustable waist band

### GENERAL TECHNICAL FEATURES

- Adjustable shoulder straps

### SAFETY

- BACK

### HOMOLOGATION

- CE EN 1621.2 Level 2

### MATERIALS

- Crash Absorb soft memory foam

### PROTECTION

- Flexagon Technology back protector

## AUXAGON WAISTCOAT MAN



## PART NUMBER

204876017

## SIZES

XS - XXXL

Freedom of movement and comfort for even greater protection. Auxagon is the protective safety vest with an innovative auxetic structure, offering exceptional ergonomic properties that follow the shape of the back to allow you to move with complete freedom. Equipped with an adjustable strap, this item fits seamlessly on your body, providing optimal comfort. Crafted from lightweight and breathable stretch fabric, it provides the confidence you need to succeed, even when worn in direct contact with the skin.



## OVERVIEW

- Ski safety vest. Ergonomic, lightweight and breathable.

## GENERAL TECHNICAL FEATURES

- Adjustable waistband
- Front YKK® full zipper

## PROTECTION

- Auxagon Technology back protector

## SAFETY

- BACK

## MATERIALS

- Carezza soft touch fabric - 81% Nylon, 19% Elastam
- Crash Absorb soft memory foam

## HOMOLOGATION

- CE EN 1621.2 Level 1

## AUXAGON WAISTCOAT WMN



## PART NUMBER

204876016

## SIZES

XS - XXXL

Freedom of movement and comfort for even greater protection. Auxagon is the protective safety vest with an innovative auxetic structure, offering exceptional ergonomic properties that follow the shape of the back to allow you to move with complete freedom. Equipped with an adjustable strap, this item fits seamlessly on your body, providing optimal comfort. Crafted from lightweight and breathable stretch fabric, it provides the confidence you need to succeed, even when worn in direct contact with the skin.



## OVERVIEW

- Women's ski safety vest. Ergonomic, lightweight and breathable.

## GENERAL TECHNICAL FEATURES

- Adjustable waistband
- Front YKK® full zipper

## PROTECTION

- Auxagon Technology back protector

## SAFETY

- BACK

## MATERIALS

- Carezza soft touch fabric - 81% Nylon, 19% Elastam
- Crash Absorb soft memory foam

## HOMOLOGATION

- CE EN 1621.2 Level 1

## AUXAGON VEST



## PART NUMBER

204876018

## SIZES

XS - XXXL

A lightweight construction for optimal freedom of movement. The Auxagon Vest boasts a memory foam Crash Absorb protector with an auxetic structure, expanding when put under tension to increase the protective area. Perfect for skiers seeking exceptional protection, this item is constructed from lightweight and breathable stretch fabric. Comfortable even when worn in direct contact with the skin.



## Y64

STRETCH-LIMO/STRETCH-LIMO



## 80F

ACID-GREEN/STRETCH-LIMO



## Y86

HIGH-RISK-RED/STRETCH-LIMO

## OVERVIEW

- Lightweight, ergonomic and breathable ski safety vest.

## GENERAL TECHNICAL FEATURES

- Adjustable waistband
- Front YKK® full zipper

## PROTECTION

- Auxagon Technology back protector

## SAFETY

- BACK

## MATERIALS

- Carezza soft touch fabric - 81% Nylon, 19% Elastam
- Crash Absorb soft memory foam

## HOMOLOGATION

- CE EN 1621.2 Level 1

## AUXAGON BACK PROTECTOR 1



## PART NUMBER

204876014

## SIZES

XS - XXXL

Enjoy your days in the snow with the safety and confidence you need to push yourself to the max on every slope. The Auxagon back protector is extremely lightweight yet offers exceptional protection. Its Crash Absorb memory foam auxetic structure follows the shape of the back, ergonomically adjusting to your body with every movement. Equipped with detachable straps, this item can be inserted inside into the dedicated Safety Pocket inside any of the Dainese HP S jackets. The protection and freedom of movement you need to take on the slopes with complete confidence.



## ERGONOMICS

- Adjustable and removable straps

## GENERAL TECHNICAL FEATURES

- Adjustable waistband

## PROTECTION

- Auxagon Technology back protector

## SAFETY

- BACK

## MATERIALS

- Carezza soft touch fabric - 81% Nylon, 19% Elastam
- Crash Absorb soft memory foam

## HOMOLOGATION

- CE EN 1621.2 Level 1

**AUXAGON BACK PROTECTOR 2****PART NUMBER**

204876015

**SIZES**

XS - XXXL

Enjoy your days in the snow with the safety and confidence you need to push yourself to the max on every slope. The Auxagon back protector is extremely lightweight yet offers exceptional protection. Its Crash Absorb memory foam auxetic structure follows the shape of the back, ergonomically adjusting to your body with every movement. Equipped with detachable straps, this item can be inserted inside into the dedicated Safety Pocket inside any of the Dainese HP S jackets. The protection and freedom of movement you need to take on the slopes with complete confidence.

**ERGONOMICS**

- Adjustable and removable straps

**GENERAL TECHNICAL FEATURES**

- Adjustable waistband

**PROTECTION**

- Auxagon Technology back protector

**SAFETY**

- BACK

**MATERIALS**

- Carezza soft touch fabric - 81% Nylon, 19% Elastam
- Crash Absorb soft memory foam

**HOMOLOGATION**

- CE EN 1621.2 Level 1



## JUNCTION WAVE 02



## PART NUMBER

2048700011

## SIZES

S - XL

A rigid back protector certified according to EN 1621.2 standard level 2, JUNCTION WAVE 02 is designed to ensure maximum lightness, ergonomics and ventilation. Designed with corrugated rigid external plates for greater distribution of the impact energy, absorbed by the plates themselves, and with a very light internal aluminum core with honeycomb structure and Crash Absorb®. Through the jointed plates, the completely revised lumbar joint, the perforation of the structure, the use of breathable fabrics and extensive adjustments, this protector ensures optimal ergonomics and maximum comfort even during the most extreme activities. Equipped with adjustable lumbar band and removable straps.



## ERGONOMICS

- Adjustable and removable straps
- Double Adjustable lumbar band
- Liner in thermoformed polyethylene foam
- Lumbar joint

## MAIN MATERIALS

- Backprotector with perimetral double density thermoformed support structure
- Inner core in aluminium Honeycomb frame and Crash Absorb®

## PERFORMANCE SHOCK

- Back protector certified to CE - Cat. II - EN 1621.2/2014 lev. 2 Standard
- External polypropylene plates with perforated and waved structure

## TEMPERATURE

- External perforated plates
- Liner inside back in polyester mesh fabric
- Lumbar strip liner and braces in double jersey

## JUNCTION WAVE 03

**PART NUMBER**

2048700012

**SIZES**

S - XL

A rigid back protector certified according to EN 1621.2 standard level 2, JUNCTION WAVE 02 is designed to ensure maximum lightness, ergonomics and ventilation. Designed with corrugated rigid external plates for greater distribution of the impact energy, absorbed by the plates themselves, and with a very light internal aluminum core with honeycomb structure and Crash Absorb®. Through the jointed plates, the completely revised lumbar joint, the perforation of the structure, the use of breathable fabrics and extensive adjustments, this protector ensures optimal ergonomics and maximum comfort even during the most extreme activities. Equipped with adjustable lumbar band and removable straps.

**ERGONOMICS**

- Adjustable and removable straps
- Double Adjustable lumbar band
- Liner in thermoformed polyethylene foam
- Lumbar joint

**MAIN MATERIALS**

- Backprotector with perimetral double density thermoformed support structure
- Inner core in aluminium Honeycomb frame and Crash Absorb®

**PERFORMANCE SHOCK**

- Back protector certified to CE - Cat. II - EN 1621.2/2014 lev. 2 Standard
- External polypropylene plates with perforated and waved structure

**TEMPERATURE**

- External perforated plates
- Liner inside back in polyester mesh fabric
- Lumbar strip liner and braces in double jersey

## CORE BACK PROTECTOR



### PART NUMBER

2048700009

### SIZES

XS/M - L/2X

Level 1 certified back protector with Auxagon technology, light and highly protective. Built in Crash Absorb®, the protector adapts to the skier's body and can be combined with jackets or mid layers that feature the dedicated pocket. Designed to protect athletes during sport activities, ensuring maximum comfort and freedom of movement.



### OVERVIEW

- Level 1 back protector built with Auxagon and Crash Absorb® technology, for maximum comfort and protection.

### PERFORMANCE SHOCK

- Multi-layer Crash Absorb back protector

### PROTECTION

- Auxagon Technology back protector

### SAFETY

- BACK

### HOMOLOGATION

- CE EN 1621.2 Level 1

**R001 SJ****PART NUMBER**

204876026

**SIZES**

XXS - XL

The R001 line was created to provide World Cup athletes with the most advanced technology in terms of performance, endurance and ergonomics. Maximum freedom of movement together with heightened safety, for the achievement of increasingly ambitious goals. The R001 SLALOM JACKET is designed specially to protect slalom athletes, providing maximum safety and freedom of movement between the poles. It is made of soft, breathable Carezza fabric, combined with elastic, anti-abrasion fabric inserts. The arms and shoulder blades are reinforced and covered with a protective layer of Memory Foam, able to absorb the force of the most violent impacts during training and competition. The slalom jacket is designed to be used in combination with a Dainese Flexagon or Auxagon back protector.

**OVERVIEW**

- Protective slalom jacket, made of breathable stretch fabric complete with Memory Foam reinforcements and protections on the arms and shoulder blades.

**GENERAL TECHNICAL FEATURES**

- Arm and forearm crash absorber cover
- Front zipper
- Shoulder blades cover

**SAFETY**

- BACK

**MATERIALS**

- Carezza soft touch fabric
- Crash Absorb soft memory foam

## FLEX SHORTS MAN

**PART NUMBER**

204879995

**SIZES**

XS - XXL

It's the first time that Dainese introduces the Flexagon technology into a shorts, bringing the comfort to a superior level while still meeting highest european safety standards. Designed to meet the needs of most demanding skiers, these shorts feature the Flex Lite technology with two overlapping layers of Crash Absorb soft memory foam on the hips and on the coccyx zone which one moreover is removable. The fabric is soft to the touch and the inner elastic bands are reinforced with silicone grippers, in order to make the protector to stay in place even during most intense phases.

**OVERVIEW**

- Certified protective shorts made to satisfy most demanding safety needs.

**GENERAL TECHNICAL FEATURES**

- Elastic band with silicone gripper
- Removable coccyx protection

**COMPOSITION - OUTER GARMENT**

- 19% Elastane
- 81% Nylon

**PROTECTION**

- Flex Lite tailbone pad
- Flex Lite technology
- Flex Lite thigh pads

**SAFETY**

- KNEES

## ACTION SHORTS EVO

**PART NUMBER**

204876010

**SIZES**

XS - XXL

The evolution of the action shorts, the ACTION SHORTS EVO were restyled with brand new fabric and anatomy. the shorts still features ladderproof elasticated mesh with hard polypropylene plates on the coccyx and sides of the thighs (CE). PE shock absorbing inserts under the plate and silicone elasticated on the thigh to hold the shorts in place.

**OVERVIEW**

- Protective shorts featuring certified hard polypropylene plates on the coccyx and sides of the thighs

**GENERAL TECHNICAL FEATURES**

- Elastic band with silicone gripper

**COMPOSITION - OUTER GARMENT**

- 19% Elastane
- 81% Nylon

**MATERIALS**

- Carezza soft touch fabric
- Polypropylene tailbone pad
- Polypropylene thigh plate
- Soft hip pads

## SHINGUARD MAN 2021 NEW WC CARBON

**PART NUMBER**

204876023

**SIZES**

M - L

Be protected against the roughest impacts with the best technology possible, made with carbon fiber, the WC CARBON SHIN GUARD accompanies the athletes during the races, protecting them with Italian racing style

**OVERVIEW**

- Dainese WC CARBON SHIN GUARD Ski Protection. Carbon fibre shin protectors for competition skiers.

**GENERAL TECHNICAL FEATURES**

- Calf straps with silicon grippers

**MATERIALS**

- 100% Carbon Fiber
- Crash Absorb soft memory foam



## NEW WC CARBON SHIN GUARD LADY ATLETI

**PART NUMBER**

204879983

**SIZES**

M - L

Be protected against the roughest impacts with the best technology possible, made with carbon fiber, the WC CARBON SHIN GUARD accompanies the athletes during the races, protecting them with Italian racing style

**OVERVIEW**

- Dainese WC CARBON SHIN GUARD Ski Protection. Carbon fibre shin protectors for competition skiers.

**GENERAL TECHNICAL FEATURES**

- Calf straps with silicon grippers

**MATERIALS**

- 100% Carbon Fiber
- Crash Absorb soft memory foam





## NEW WC CARBON ARM GUARD MAN ATLETI

**PART NUMBER**

204879980

**SIZES**

M - XL

Be protected against the roughest impacts with the best technology possible, made with carbon fiber, the WC CARBON ARM GUARD accompanies the athletes during the races, protecting them with Italian racing style

**OVERVIEW**

- Dainese WC CARBON ARM GUARD Ski Protection. Carbon fibre arm protectors for competition skiers.

**GENERAL TECHNICAL FEATURES**

- Forearm straps with silicone grippers

**MATERIALS**

- 100% Carbon Fiber
- Crash Absorb soft memory foam



## NEW WC CARBON ARM GUARD LADY ATLETI

**PART NUMBER**

204879981

**SIZES**

M - L

Be protected against the roughest impacts with the best technology possible, made with carbon fiber, the WC CARBON ARM GUARD accompanies the athletes during the races, protecting them with Italian racing style

**OVERVIEW**

- Dainese WC CARBON ARM GUARD Ski Protection. Carbon fibre arm protectors for competition skiers.

**GENERAL TECHNICAL FEATURES**

- Forearm straps with silicone grippers

**MATERIALS**

- 100% Carbon Fiber
- Crash Absorb soft memory foam



## R001 SHIN GUARD

### PART NUMBER

204876030

### SIZES

N

The R001 line was created to provide World Cup athletes with the most advanced technology in terms of performance, endurance and ergonomics. Maximum freedom of movement together with heightened safety, for the achievement of increasingly ambitious goals. The R001 SHIN GUARD is the racing shin guard in high density polypropylene derived directly from those used by Dainese athletes competing in the World Cup. It combines superior strength with great ease of use. The Memory Foam inner lining is designed to adhere perfectly to the boot, preventing it from sliding even in the event of a violent impact with a pole. The silicone straps allow for better grip and are designed to be easily adjusted while wearing gloves.

### OVERVIEW

- Racing shin guard in polypropylene, with Memory Foam inner lining and silicone straps for easy adjustment while wearing gloves.

### GENERAL TECHNICAL FEATURES

- Calf straps with silicon grippers

### MATERIALS

- 100% High tenacity Polypropylene
- Crash Absorb soft memory foam

### SAFETY

- KNEES



## R001 FOREARM GUARD

### PART NUMBER

204876031

### SIZES

N

The R001 line was created to provide World Cup athletes with the most advanced technology in terms of performance, endurance and ergonomics. Maximum freedom of movement together with heightened safety, for the achievement of increasingly ambitious goals. The R001 FOREARM GUARD is the racing forearm guard in high density polypropylene derived directly from those used by Dainese athletes competing in the World Cup. It combines superior strength with great ease of use. The Memory Foam inner lining is designed to adhere perfectly to the arm, preventing it from sliding even in the event of a violent impact with a pole. The silicone straps allow for better grip and are designed to be easily adjusted while wearing gloves. The arm guard is designed to be cut and adapted to even the youngest skiers.

### OVERVIEW

- Racing arm brace in polypropylene, with Memory Foam inner lining and silicone straps for easy adjustment while wearing gloves.

### GENERAL TECHNICAL FEATURES

- Forearm straps with silicone grippers

### MATERIALS

- 100% High tenacity Polypropylene
- Crash Absorb soft memory foam

### SAFETY

- ELBOWS



## HECTOR WRISTGUARD 13

**PART NUMBER**

204879919

**SIZES**

S - L

Neoprene wrist guard with shock absorbing polypropylene pad. Internal polyethylene padding and triple adjustment strap closing system.

**OVERVIEW**

- HECTOR WRISTGUARD 13 ski protection. Neoprene wrist guard with rigid polypropylene anti-shock, anti-sprain plates.

**CHARACTERISTICS**

- VELCRO® strap adjustment

**PERFORMANCE SHOCK**

- Hector™ system wrist guard

**COMPOSITION**

- 30% Rubber
- 70% Polyester



## KNEE GUARD GIANT 05

---

**PART NUMBER**

204879625

**SIZES**

N

**MATERIALS**

- Crash Absorb soft memory foam

**SAFETY**

- KNEES



## PRO ARMOR KNEE GUARD



### PART NUMBER

204879972

### SIZES

S - XL

The PRO-ARMOR KNEE GUARD offer the ultimate blend of mobility and protection, the low-profile design delivers unrestricted comfort and all-day comfort while still meeting European standards for impact protectors. Additional side padding bolsters protection against the most common crashes and dual micro-adjustable elastic bands ensure a customized fit for every rider.



### OVERVIEW

- The PRO-ARMOR KNEE GUARD offer the ultimate blend of mobility and protection, the low-profile design delivers unrestricted comfort and all-day comfort while still meeting European standards for impact protectors.

### MAIN MATERIALS

- Crash Absorb soft memory foam

### PERFORMANCE SHOCK

- Pro Armor knee pads
- Pro Armor side pads

### SAFETY

- KNEES

## PRO ARMOR ELBOW GUARD



### PART NUMBER

204879973

### SIZES

S - XL

The PRO-ARMOR ELBOW GUARD offer the ultimate blend of mobility and protection, the low-profile design delivers unrestricted comfort and all-day comfort while still meeting European standards for impact protectors. Additional side padding bolsters protection against the most common crashes and dual micro-adjustable elastic bands ensure a customized fit for every rider.



### OVERVIEW

- The PRO-ARMOR ELBOW GUARD offer the ultimate blend of mobility and protection, the low-profile design delivers unrestricted comfort and all-day comfort while still meeting European standards for impact protectors.

### PERFORMANCE SHOCK

- Pro Armor elbow pads

### SAFETY

- ELBOWS





## SCARABEO FLEXAGON WAISTCOAT 2

### PART NUMBER

2048700007

### SIZES

JS - JXL

Flexagon redefines the standard of protective comfort with its innovative construction technology. The new version was restyled with a brand new fabric, capable to provide the skier with an unnoticed comfort to the touch and breathe better than the previous fabric. The exceptional flexibility is aided by overlapping layers of Crash Absorb® memory foam that move independently of one another, and follow the anatomy of the body. Its ergonomic pattern of hexagon shaped soft pads provide comfort and maximum freedom of movement (6 sides, mobility on the 30°, 90° and 150° axes) along with effective protection.

**50L**

SILVER FILIGREE/STELLAR

### OVERVIEW

- Certified Back Protector for kids with the iconic Flexagon design, that ensure exceptional flexibility and impact resistance.

### COMPOSITION - INTERLINING FABRIC

- 100% Polyester

### COMPOSITION - OUTER GARMENT

- 19% Elastane
- 81% Nylon

### SAFETY

- BACK

**Y60**

STRETCH-LIMO/HIGH-RISK-RED

## SCARABEO BACK PROTECTOR 2

### PART NUMBER

2048700008

### SIZES

JXS - JXL

Flexagon redefines the standard of protective comfort with its innovative construction technology. The exceptional flexibility is aided by overlapping layers of Crash Absorb® memory foam that move independently of one another, and follow the anatomy of the body. Its ergonomic pattern of hexagon shaped soft pads provide comfort and maximum freedom of movement (6 sides, mobility on the 30°, 90° and 150° axes) along with effective protection.



### OVERVIEW

- The Dainese Flexagon ski back protector redefines the standards of protective comfort.

### ERGONOMICS

- Adjustable waist band

### GENERAL TECHNICAL FEATURES

- Adjustable shoulder straps

### SAFETY

- BACK

### HOMOLOGATION

- CE EN 1621.2 Level 2

### MATERIALS

- Crash Absorb soft memory foam

### PROTECTION

- Flexagon Technology back protector

## SCARABEO VEST

### PART NUMBER

204876019

### SIZES

JS - JL

For little skiers who need reliable, comfortable, easy-to-wear and long-lasting protection. Boasting a Crash Absorb protector with an auxetic structure, the Scarabeo Vest Lite expands its protective area when put under tension. Constructed from lightweight and breathable ultra-stretch fabric, this item is perfect for use even in direct contact with the skin. Plus, thanks to its RIBBO adjustable sizing system, it can be used for up to three consecutive ski seasons. Ergonomics and comfort. There for little skiers as they grow.



### 80F

ACID-GREEN/STRETCH-LIMO



### Y64

STRETCH-LIMO/STRETCH-LIMO



### Y86

HIGH-RISK-RED/STRETCH-LIMO

### OVERVIEW

- Lightweight and easily adjustable kids' ski safety vest.

### GENERAL TECHNICAL FEATURES

- Adjustable waistband
- Front YKK® full zipper

### PROTECTION

- Auxagon Technology back protector

### SAFETY

- BACK

### MATERIALS

- Carezza soft touch fabric - 81% Nylon, 19% Elastam
- Crash Absorb soft memory foam

### HOMOLOGATION

- CE EN 1621.2 Level 1

## SCARABEO R001 SJ

### PART NUMBER

204876025

### SIZES

JXS - JXL

The Dainese Scarabeo collection offers young skiers the technologies developed for World Cup athletes and used in international competition. All the safety of the professionals, to protect the champions of tomorrow. The SCARABEO R001 SLALOM JACKET provides young athletes with slalom protection, for maximum safety and freedom of movement between the poles. It is made of soft, breathable Carezza fabric, combined with elastic, anti-abrasion fabric inserts. The arms and shoulder blades are reinforced and covered with a protective layer of Memory Foam, able to absorb the force of the most violent impacts. The slalom jacket is designed to be used in combination with a Dainese Flexagon or Auxagon back protector. The R001 line was created to provide World Cup athletes with the most advanced technology in terms of performance, endurance and ergonomics. Maximum freedom of movement together with heightened safety, for the achievement of increasingly ambitious goals.



### OVERVIEW

- Kids' protective slalom jacket, made of breathable stretch fabric complete with Memory Foam reinforcements and protections on the arms and shoulder blades.

### GENERAL TECHNICAL FEATURES

- Arm and forearm crash absorber cover
- Front zipper
- Shoulder blades cover

### MATERIALS

- Carezza soft touch fabric - 81% Nylon, 19% Elastan
- Crash Absorb soft memory foam

### SAFETY

- ELBOWS

## SCARABEO R001 SHIN GUARD

### PART NUMBER

204876032

### SIZES

N

The Dainese Scarabeo collection offers young skiers the technologies developed for World Cup athletes and used in international competition. All the safety of the professionals, to protect the champions of tomorrow. The R001 SHIN GUARD is the racing shin guard in high density polypropylene derived directly from those used by Dainese athletes competing in the World Cup. It combines superior strength with great ease of use. The Memory Foam inner lining is designed to adhere perfectly to the boot, preventing it from sliding even in the event of a violent impact with a pole. The silicone straps allow for better grip and are designed to be easily adjusted while wearing gloves. The R001 line was created to provide World Cup athletes with the most advanced technology in terms of performance, endurance and ergonomics. Maximum freedom of movement together with heightened safety, for the achievement of increasingly ambitious goals.

### OVERVIEW

- Kids' racing shin guard in polypropylene, with Memory Foam inner lining and silicone straps for easy adjustment while wearing gloves.

### GENERAL TECHNICAL FEATURES

- Calf straps with silicon grippers

### MATERIALS

- 100% High tenacity Polypropylene
- Crash Absorb soft memory foam

### SAFETY

- KNEES



## SCARABEO FLEX SHORTS

**PART NUMBER**

204879996

**SIZES**

JS - JXL

It's the first time that Dainese introduces the Flexagon technology into a shorts, bringing the comfort to a superior level while still meeting highest european safety standards. Designed to meet the needs of most demanding skiers, these shorts feature the Flex Lite technology with two overlapping layers of Crash Absorb soft memory foam on the hips and on the coccyx zone which one moreover is removable. The fabric is soft to the touch and the inner elastic bands are reinforced with silicone grippers, in order to make the protector to stay in place even during most intense phases.

**OVERVIEW**

- Certified protective shorts made to satisfy most demanding safety needs.

**GENERAL TECHNICAL FEATURES**

- Elastic band with silicone gripper
- Removable coccyx protection

**COMPOSITION - OUTER GARMENT**

- 19% Elastane
- 81% Nylon

**PROTECTION**

- Flex Lite tailbone pad
- Flex Lite technology
- Flex Lite thigh pads

**SAFETY**

- KNEES

## HP ERGOTEK PRO MITTEN GLOVES

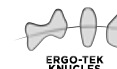
### PART NUMBER

204815950

### SIZES

XXS - XXL

The HP ERGOTEK PRO mittens combine specialist experience on the Alpine Ski World Cup pistes with feedback from world-class athletes and Olympic champions. The mittens are made using innovative ERGOTEK technology, protecting your knuckles with independent ergonomically shaped plates, whilst allowing each finger to move with maximum freedom. Crafted from premium leather, they feature Super Fabric inserts and protective padding, guaranteeing maximum resistance against abrasion. Primaloft® padding provides superior thermal insulation. Designed to respond to the needs of the most demanding of skiers, these mittens offer the ultimate blend of ergonomics and safety, giving you the confidence you need to push yourself to your limits, even on the most challenging of pistes.



### OVERVIEW

- Leather ski racing mittens with ERGOTEK protection and Primaloft® padding.

### GENERAL TECHNICAL FEATURES

- ERGOTEK™ Knuckles Technology
- Full Leather
- Internal Fingers Lining
- Reinforced Thumb construction
- Super Fabric® reinforcements
- Wrist strap
- Wrist zip closure

### MAIN MATERIALS

- Goatskin Leather
- PrimaLoft® insulation

### MATERIALS

- Composite Knuckles
- SuperFabric®



## ERGOTEK PRO MITTEN SOFIA GOGGIA

## PART NUMBER

2048100006

## SIZES

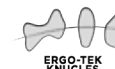
XXS - XXL

The HP ERGOTEK PRO SOFIA GOGGIA mittens combine specialist experience on the Alpine Ski World Cup pistes with feedback from world-class athletes and Olympic champions. The mittens are made using innovative ERGOTEK technology, protecting your knuckles with independent ergonomically shaped plates, whilst allowing each finger to move with maximum freedom. Crafted from premium leather, they feature Super Fabric inserts and protective padding, guaranteeing maximum resistance against abrasion. Primaloft® padding provides superior thermal insulation. Designed to respond to the needs of the most demanding of skiers, these mittens offer the ultimate blend of ergonomics and safety, giving you the confidence you need to push yourself to your limits, even on the most challenging of pistes.



9ZZ

WHITE-ITALY



## OVERVIEW

- Leather ski racing mittens with ERGOTEK protection and Primaloft® padding

## GENERAL TECHNICAL FEATURES

- ERGOTEK™ Knuckles Technology
- Super Fabric® reinforcements
- Reinforced Thumb construction
- Wrist zip closure
- Wrist strap
- Internal Fingers Lining
- Full Leather

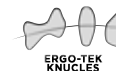
## MAIN MATERIALS

- PrimaLoft® insulation
- Goatskin Leather

## MATERIALS

- SuperFabric®
- Composite Knuckles

## HP ERGOTEK GLOVES

D-THERMO  
INSULATION

## PART NUMBER

204815952

## SIZES

XS - XXL

Superior performance and exceptional comfort on the most challenging of pistes. Specially crafted to respond to the needs of Alpine Ski World Cup athletes, the HP ERGOTEK combine complete mobility with the protection of ERGOTEK composite plates, designed to protect the knuckles whilst allowing optimal freedom of movement. Their waterproof fabric and leather construction provides maximum comfort even during the harshest conditions. The confidence you need to perform to your best is in your hands.

## GENERAL TECHNICAL FEATURES

- ERGOTEK™ Knuckles Technology
- Wrist strap
- Wrist zip closure

## MAIN MATERIALS

- Goatskin Leather

## MATERIALS

- Composite Knuckles
- D-Thermo insulation



Y64

STRETCH-LIMO/STRETCH-LIMO

## HP GLOVES

## PART NUMBER

204815947

## SIZES

XS - XXL

Specially crafted to respond to all kinds of ski conditions, the HP gloves are waterproof and offer thermal insulation, allowing you to enjoy every day in the snow to the max, whatever the weather. Designed to fulfill the needs of the most demanding of skiers, these gloves offer optimal resistance and grip, thanks to their abrasion-resistant fabric construction and protective inserts on the palms and knuckles, inspired by Dainese motorcycle gear. Protection and sensitivity for superior performance.



81B

LILY-WHITE/STRETCH-LIMO



Y64

STRETCH-LIMO/STRETCH-LIMO

## OVERVIEW

- Waterproof thermal ski gloves made from abrasion-resistant fabric.

## CHARACTERISTICS

- Palm reinforcements

## GENERAL TECHNICAL FEATURES

- Knuckles Protector
- Padded Thumb and fingers
- Waterproof
- Wrist strap

## MAIN MATERIALS

- Leather

## MATERIALS

- D-Thermo insulation

## HP GLOVES SPORT



## PART NUMBER

204815955

## SIZES

XXXS - XXL

Garments in the HP collection are designed to offer maximum dexterity and freedom of movement on downhill slopes, as well as greater comfort and thermal insulation. Whatever the weather. The HP GLOVES SPORT are tested by World Cup athletes. They are constructed by combining premium leather and stretch fabric to offer total freedom of hand movement and maximum resistance in those parts of the glove most subject to stress in the case of a fall, such as the back and palm. The thermal insulation in Primaloft® Silver offers great protection from the coldest temperatures, allowing perfect breathability throughout all phases of activity. The short cut is very practical, offering the least possible interference with the jacket cuff, while the wrist strap allows for quick and easy fit adjustment even when wearing both gloves.



601

WHITE/BLACK

## OVERVIEW

- Short ski gloves in leather and elastic fabric with Primaloft® Silver thermal insulation.

## GENERAL TECHNICAL FEATURES

- Hybrid Body-Mapped Construction
- Palm reinforcements
- Wrist strap

## MATERIALS

- 50% Goat Leather
- 50% Polyester
- PrimaLoft® insulation



606

BLACK/RED

## KNIT GLOVES



## PART NUMBER

2048100002

## SIZES

XS - XXL

Made of knitted fabric and equipped with leather reinforcement on the palms, KNIT GLOVES are designed to guarantee maximum freedom of movement combined with maximum protection. Their 3M® Thinsulate Insulation 80 g padding makes them great allies against the coldest temperatures. Protection against atmospheric agents is also ensured by the housing for the waterproof fabric cover on the wrists, which can be taken out in the event of snow or rain. KNIT GLOVES are equipped with the Dainese Smart Touch system on the index fingers.



Y41

STRETCH-LIMO



Y45

HIGH-RISK-RED

## OVERVIEW

- Fabric glove with leather palm reinforcements and 3M® Thinsulate insulation 80 g padding.

## CHARACTERISTICS

- Dainese Smart Touch on the index finger

## ERGONOMICS

- Neoprene cuff

## GENERAL TECHNICAL FEATURES

- Knuckle protection

## MAIN MATERIALS

- Leather palm reinforcement

## MATERIALS

- 3M® Thinsulate insulation 80gr
- Back knit construction with membrane
- Foldable cover with waterproof membrane

**D-IMPACT 13 D-DRY GLOVE****PART NUMBER**

204815916

**SIZES**

XS - XXL

This glove was designed with the snowboarder's needs for comfort and safety in mind. The back is provided with elastic and breathable waterproof fabric, D-Dry® membrane, and Primaloft One® thermal padding. Palm and index finger reinforcement in PU leather soft and comfortable foam rubber cushions on the fingers. Featuring the patented integrated anti-shock Hector™ wrist guard. The glove is completed by cuff drawstring closing.

**B84**

BLACK/CARBON


**HECTOR™**  
 SYSTEM WRIST GUARD
**OVERVIEW**

- D-IMPACT 13 D-DRY® GLOVE snowboard gloves. Comfortable, safe and breathable.

**CHARACTERISTICS**

- Soft foam cushions on fingers

**MAIN MATERIALS**

- D-Dry® Membrane
- PrimaLoft® insulation
- PU Leather palm
- stretch fabric
- Touch screen compatible index/ thumb fingertip

**PERFORMANCE SHOCK**

- Hector™ system wrist guard

**COMPOSITION**

- 10% Polypropylene
- 5% Polycarbonate
- 5% Polyester
- 80% Nylon

## HP GLOVES WMN

**PART NUMBER**

204815948

**SIZES**

XS - L

Specially crafted to respond to all kinds of ski conditions, the HP gloves are waterproof and offer thermal insulation, allowing you to enjoy every day in the snow to the max, whatever the weather. Designed to respond to the needs of the most demanding of skiers, these gloves offer optimal resistance and grip, thanks to their abrasion-resistant fabric construction and protective inserts on the palms and knuckles, inspired by Dainese motorcycle gear. Protection and sensitivity for superior performance.

**CHARACTERISTICS**

- Palm reinforcements

**GENERAL TECHNICAL FEATURES**

- Padded Knuckles
- Waterproof
- Wrist strap

**MAIN MATERIALS**

- Leather

**MATERIALS**

- D-Thermo insulation



## SCARABEO GLOVES

**D-THERMO**  
INSULATION

**D-DRY**  
®

### PART NUMBER

204815945

### SIZES

JS - JXL

Easy wear ski gloves for most demanding youths



**Y60**

STRETCH-LIMO/HIGH-RISK-RED



**Y64**

STRETCH-LIMO/STRETCH-LIMO



**Z87**

STRETCH-LIMO/RUSSET-ORANGE



**Z88**

STRETCH-LIMO/MISTY-ROSE

### CHARACTERISTICS

- Palm reinforcements
- Touch screen compatible index/ thumb fingertip
- Undercuff design

### COMPOSITION

- 13% Spandex
- 87% Nylon

### MATERIALS

- D-Dry (Outer fabric)
- D-Thermo insulation



## HP SCARABEO GLOVES JUNIOR

**PART NUMBER**

204815949

**SIZES**

JS - JXL

The freedom to learn with maximum comfort, protection and fun. The Scarabeo HP gloves are both waterproof and thermally insulating. They are there for young skiers throughout all their snow adventures, from the slope to playtime. Resistant and easy to put on: specially designed for the champions of tomorrow.

**CHARACTERISTICS**

- Palm reinforcements
- Undercuff design

**GENERAL TECHNICAL FEATURES**

- Waterproof
- Wrist strap

**MATERIALS**

- D-Dry (Outer fabric)
- D-Thermo insulation

**91B**

STRETCH-LIMO/LILY-WHITE

## R001 CARBON

### PART NUMBER

204840385

### SIZES

XS - XL

The R001 line was created to provide World Cup athletes with the most advanced technology in terms of performance, endurance and ergonomics. Maximum freedom of movement together with heightened safety, for the achievement of increasingly ambitious goals. The R001 CARBON is the helmet used by World Cup athletes. The latest evolution of the protection worn by Olympic champions. The benchmark for skiers in high-speed disciplines. The shell is made entirely of carbon fiber, a material that offers unbeatable impact resistance and protection at a very low weight. Its shape is molded for greater front and lateral aerodynamic performance. Together with the thick EPS inner shell, this construction exceeds the strictest CE, ASTM and FIS homologation standards. The interior comprises the Rabbit system and precious Shalimar fabric, anti-bacterial and anti-odor, as well as highly breathable and enveloping. The ear sections, with details in magnesium, copper and aluminum alloy, are designed to eliminate any rustling or secondary sound, allowing the athlete to fully concentrate during every phase of the performance. The micrometric closure guarantees the greatest possible precision and safety. The micrometric closure guarantees the highest safety standards.



### OVERVIEW

- The Ski World Cup helmet. Maximum protection and lightness for high-speed disciplines, with a carbon fiber shell.

### GENERAL TECHNICAL FEATURES

- Goggles fastening system
- Micrometric chin strap closure

### MATERIALS

- 100% Carbon Fiber
- 100% EPS Inner shell
- 100% Shalimar Rabbit Liner

### HOMOLOGATION

- ASTM F-2040 type A
- CE EN 1077 type A
- FIS RH 2013

## R001 FIBER

## PART NUMBER

204840384

## SIZES

XS - XL

The R001 line was created to provide World Cup athletes with the most advanced technology in terms of performance, endurance and ergonomics. Maximum freedom of movement together with heightened safety, for the achievement of increasingly ambitious goals. The R001 FIBER is the fiberglass helmet inspired by the protection used by World Cup athletes. The shell is made entirely of fiberglass, lightweight, durable, and molded for aerodynamic performance at the sides and upper front. Together with the thick EPS inner shell, this construction exceeds the strictest CE, ASTM and FIS homologation standards. The interior comprises the Rabbit system and precious Shalimar fabric, anti-bacterial and anti-odor, as well as highly breathable and enveloping. The ear sections, with details in nylon and fiberglass, are designed to eliminate any rustling or secondary sound, allowing the athlete to fully concentrate during every phase of the performance. The micrometric closure guarantees the greatest possible precision and safety.

001  
BLACK

## GENERAL TECHNICAL FEATURES

- Goggles fastening system
- Micrometric chin strap closure

## MATERIALS

- 100% EPS Inner shell
- 100% Fiberglass Shell
- 100% Shalimar Rabbit Liner

## HOMOLOGATION

- ASTM F-2040 type A
- CE EN 1077 type A
- FIS RH 2013



**R001 SOFIA GOGGIA****PART NUMBER**

2148490001

**SIZES**

XS - XL

The R001 line was created to provide World Cup athletes with the most advanced technology in terms of performance, endurance, and ergonomics. Maximum freedom of movement together with heightened safety, for the achievement of increasingly ambitious goals. R001 SOFIA GOGGIA is the fiberglass helmet inspired by the protection used by World Cup athletes. The shell is made entirely of fiberglass, lightweight, durable, and molded for aerodynamic performance at the sides and upper front. Together with the thick EPS inner shell, this construction exceeds the strictest CE, ASTM and FIS homologation standards. The interior comprises the Rabbit system and high-quality Shalimar fabric, anti-bacterial and anti-odor, as well as highly breathable and enveloping. The ear sections, with details in nylon and fiberglass, are designed to eliminate any rustling or secondary sound, allowing the athlete to fully concentrate during every phase of the performance. The micrometric closure guarantees the greatest possible precision and safety.

**GENERAL TECHNICAL FEATURES**

- Goggles fastening system
- Micrometric chin strap closure

**MATERIALS**

- 100% EPS Inner shell
- 100% Shalimar Rabbit Liner
- 100% Fiberglass Shell

**HOMOLOGATION**

- ASTM F-2040 type A
- CE EN 1077 type A
- FIS RH 2013



## R001 CHINGUARD

---

**PART NUMBER**

204855610

**SIZES**

N

R001 Chin guard provides protection against slalom gates. Fits with R001 FIBER helmet.



## NUCLEO MIPS SKI HELMET

### PART NUMBER

204840372

### SIZES

XS-S, M-L, XL-XXL

Maximum safety for superior performance. The NUCLEO helmet is lightweight, compact and aerodynamic, specially designed to offer a flawless fit on the head. REVERSE SAFE technology combines a lightweight outer shell with the multi-impact protection of the ABS ARMORING, enveloping the head and sheltering the areas that are more delicate and statistically more susceptible to impact in the event of a fall. The MIPS system ensures even greater protection against rotational forces, preventing the head from serious injuries caused by twisting in the event of impact. The BOA system guarantees exceptional comfort, allowing the skier to adjust the fit with exceptional precision. Air vents also channel the flow of air through the shell and interior, transporting excess heat and humidity out of the helmet through the integrated spoiler, resulting in the perfect combination of ventilation and aerodynamic performance. A distinctive design, specially created to give you the confidence you need to give your best on the slopes, whatever the weather.



**017**  
STRETCH LIMO/LILY WHITE



**018**  
GREEN FOUR/STRETCH LIMO



**019**  
LILY WHITE/STONE BLUE



**022**  
MATT STRETCH LIMO/BLACK



**016**  
LILY WHITE/RACING RED

### GENERAL TECHNICAL FEATURES

- Air spoiler
- ARMORING - Protective ring technology
- BOA® Fit System
- EVA ear pads
- Goggles fastening system
- Inner air channels ventilation
- REVERSE - Hybrid Construction
- Thermoformed, removable and washable liner

### MATERIALS

- 100% EPS Inner shell
- 77% ABS, 23% PC

### HOMOLOGATION

- ASTM F-2040
- CE EN 1077 type B

## NUCLEO SKI HELMET

## PART NUMBER

204840371

## SIZES

XS-S, M-L, XL-XXL

Maximum safety for superior performance. The NUCLEO helmet is lightweight, compact and aerodynamic, specially designed to offer a flawless fit on the head. REVERSE SAFE technology combines a lightweight outer shell with the multi-impact protection of the ABS ARMORING, enveloping the head and sheltering the areas that are more delicate and statistically more susceptible to impact in the event of a fall. The BOA system guarantees exceptional comfort, allowing the skier to adjust the fit with exceptional precision. Air vents also channel the flow of air through the shell and interior, transporting excess heat and humidity out of the helmet through the integrated spoiler, resulting in the perfect combination of ventilation and aerodynamic performance. A distinctive design, specially created to give you the confidence you need to give your best on the slopes, whatever the weather.



076

BLACK-MATT

ARMORING

REVERSESAFE

AIRINTAKES

BOA®



09G

NARDO-GRAY/BLACK



015

PETROL BLUE



014

PURE WHITE

## GENERAL TECHNICAL FEATURES

- Air spoiler
- ARMORING - Protective ring technology
- BOA® Fit System
- EVA ear pads
- Goggles fastening system
- Inner air channels ventilation
- REVERSE - Hybrid Construction
- Thermoformed, removable and washable liner

## MATERIALS

- 100% EPS Inner shell
- 77% ABS, 23% PC

## HOMOLOGATION

- ASTM F-2040
- CE EN 1077 type B

## NUCLEO AF SKI HELMET ASIAN FIT

ARMORING

REVERSESAFE

AIRINTAKES

BOA®

## PART NUMBER

204840369

## SIZES

XS-S, M-L, XL-XXL

Maximum safety for superior performance. The NUCLEO helmet is lightweight, compact and aerodynamic, specially designed to offer a flawless fit on the head. REVERSE SAFE technology combines a lightweight outer shell with the multi-impact protection of the ABS ARMORING, enveloping the head and sheltering the areas that are more delicate and statistically more susceptible to impact in the event of a fall. The BOA system guarantees exceptional comfort, allowing the skier to adjust the fit with exceptional precision. Air vents also channel the flow of air through the shell and interior, transporting excess heat and humidity out of the helmet through the integrated spoiler, resulting in the perfect combination of ventilation and aerodynamic performance. A distinctive design, specially created to give you the confidence you need to give your best on the slopes, whatever the weather.

## GENERAL TECHNICAL FEATURES

- Air spoiler
- ARMORING - Protective ring technology
- Asian fit
- BOA System size micro adjustment
- EVA ear pads
- Goggles fastening system
- Inner air channels ventilation
- REVERSE - Hybrid Construction
- Thermoformed, removable and washable liner

## MATERIALS

- 100% EPS Inner shell
- 77% ABS, 23% PC

## HOMOLOGATION

- ASTM F-2040
- CE EN 1077 type B





## ELEMENTO MIPS



## PART NUMBER

204840374

## SIZES

XS-S, M-L, XL-XXL

Dainese ski helmets are designed around the skier's head, encircling it and offering maximum protection and lightness, with a functional design enhancing performance. ELEMENTO sets the standard in terms of lightness and protection. Its durable and lightweight polycarbonate shell and EPS inner shell are able to absorb the most violent impacts, and exceed the strictest European and North American certification standards – CE EN 1077 type B and ASTM F-2040 – while ensuring an extremely low helmet weight. The large central ventilation holes are positioned at the point of greatest air pressure and allow the flow inside the helmet to be channeled, transporting excess moisture and heat to the outside. The inside of the helmet comprises a warm and breathable thermoformed lining, which makes the helmet very comfortable, allowing for the rapid absorption of sweat and moisture. The geometry of the ear section is inspired by the auxetic shapes present in nature, shapes that expand in every direction as a result of an impact or stress. Soft and breathable, it comfortably envelops while allowing the wearer to freely perceive sounds coming from outside. The ELEMENTO MIPS model is equipped with the patented MIPS Brain Protection System, which significantly reduces the impact force transmitted to the brain in a collision, protecting it from any dangerous rotational accelerations of the head, one of the main causes of serious brain damage in case of a fall or impact. The buckle closure is durable and easy to operate even when wearing gloves. The rear mask clip is made of silicone, with a practical metal button.



602

WHITE/RED



629

GRAY/BLACK



003

WHITE

## GENERAL TECHNICAL FEATURES

- Goggles fastening system
- ITW Buckle
- MIPS Brain Protection System (BPS)
- Removable ear pads
- Rotor size micro adjustments
- Thermoformed, removable and washable liner

## MATERIALS

- 100% EPS Inner shell
- 100% Polycarbonate

## HOMOLOGATION

- ASTM F-2040
- CE EN 1077 type B

## ELEMENTO

## PART NUMBER

204840376

## SIZES

XS-S, M-L, XL-XXL

Dainese ski helmets are designed around the skier's head, encircling it and offering maximum protection and lightness, with a functional design enhancing performance. ELEMENTO sets the standard in terms of lightness and protection. Its durable and lightweight polycarbonate shell and EPS inner shell are able to absorb the most violent impacts, and exceed the strictest European and North American certification standards – CE EN 1077 type B and ASTM F-2040 – while ensuring an extremely low helmet weight. The large central ventilation holes are positioned at the point of greatest air pressure and allow the flow inside the helmet to be channeled, transporting excess moisture and heat to the outside. The inside of the helmet comprises a warm and breathable thermoformed lining, which makes the helmet very comfortable, allowing for the rapid absorption of sweat and moisture. The geometry of the ear section is inspired by the auxetic shapes present in nature, shapes that expand in every direction as a result of an impact or stress. Soft and breathable, it comfortably envelops while allowing the wearer to freely perceive sounds coming from outside. The buckle closure is durable and easy to operate even when wearing gloves. The rear mask clip is made of silicone, with a practical metal button.



601

WHITE/BLACK



606

BLACK/RED



012

PETROL BLUE



013

SAGE GREEN

## GENERAL TECHNICAL FEATURES

- Goggles fastening system
- ITW Buckle
- Removable ear pads
- Rotor size micro adjustments
- Thermoformed, removable and washable liner

## MATERIALS

- 100% EPS Inner shell
- 100% Polycarbonate

## HOMOLOGATION

- ASTM F-2040
- CE EN 1077 type B

## HP HORIZON



## PART NUMBER

204930000

## SIZES

S - L

An ultra-wide field of vision combined with a Carl Zeiss® Multilayer lens: the ultimate goggles for the most challenging of slopes. Boasting an antifog treatment and upper and lower air vents, the HP HORIZON goggles offer superior ventilation. Quickly swap the lens for the antifog version to enjoy maximum visibility all day long.



82E

STRETCH-LIMO/BLUE



Y41

STRETCH-LIMO



81E

STRETCH-LIMO/SILVER



88B

LILY-WHITE

## GENERAL TECHNICAL FEATURES

- 1x Extra fog lens
- Changeable lens
- Elastic band with silicone gripper
- Extreme field of view

## MATERIALS

- Carl Zeiss® Fog lens S1
- Carl Zeiss® Multilayer lens S2

**SECOND LENS  
INCLUDED**

## HP HORIZON ASIAN FIT



## PART NUMBER

204930001

## SIZES

S - L

An ultra-wide field of vision combined with a Carl Zeiss® Multilayer lens: the ultimate goggles for the most challenging of slopes. Boasting an antifog treatment and upper and lower air vents, the HP HORIZON goggles offer superior ventilation. Quickly swap the lens for the antifog version to enjoy maximum visibility all day long.



82E

STRETCH-LIMO/BLUE



Y41

STRETCH-LIMO



81E

STRETCH-LIMO/SILVER



88B

LILY-WHITE

## GENERAL TECHNICAL FEATURES

- 1x Extra fog lens
- Asian fit
- Changeable lens
- Elastic band with silicone gripper
- Extreme field of view

## MATERIALS

- Carl Zeiss® Fog lens S1
- Carl Zeiss® Multilayer lens S2

**SECOND LENS  
INCLUDED**

## HP HO LENS CYLINDRICAL



## PART NUMBER

204855589

## SIZES

L

An ultra-wide field of vision combined with a Carl Zeiss® Multilayer lens: the ultimate goggles for the steepest of slopes. Zeiss® technology increases contrast and filters the light for faster, more accurate vision in the snow.

**39C**

PINK-GOLD

**013**  
ORANGE**07F**  
SILVER-MIRROR**40C**  
ORANGE-GOLD**K77**  
BLUE-MIRROR

## OVERVIEW

- Carl Zeiss® lens for HP Horizon goggles, offering increased contrast and filtered light.

## CHARACTERISTICS

- Optics by Carl Zeiss Vision

## MATERIALS

- Carl Zeiss Fog lens S1 (only col var. 013)
- Carl Zeiss Multilayer lens S3 (only col var. 07F)
- Carl Zeiss® Multilayer lens S2

## SCARABEO ELEMENTO

## PART NUMBER

204840401

## SIZES

XS-S - S-M

Dainese SCARABEO ski helmets are designed around the heads of young skiers, encircling them and offering maximum protection, lightness and comfort, imperceptible protection so that little skiers can have fun in safety. SCARABEO ELEMENTO sets the standard for its category in terms of lightness and protection. Its durable and lightweight polycarbonate shell and EPS inner shell are able to absorb the most violent impacts, and exceed the strictest European and North American certification standards – CE EN 1077 type B and ASTM F-2040. Due to the compact design, they guarantee an extremely low helmet weight (only 380 g in size JS-JM). The large central ventilation holes are positioned at the point of greatest air pressure and allow the flow inside the helmet to be channeled, transporting excess moisture and heat to the outside. The inside of the helmet comprises a warm and breathable thermoformed lining, which makes the helmet very comfortable, allowing for the rapid absorption of sweat and moisture. Soft and breathable protectors allow the ears to be enveloped in comfort. The buckle closure ensures that it is durable and easy to operate even when wearing gloves. The rear mask clip is made of silicone, with a practical metal button that means the mask can easily be secured to the helmet. To enable multi-season use, it features fit adjustment (4 sizes) allowing you to follow the growth of little skiers and ensuring that the fit is always right and comfortable.



61H

METALLIC-RED/WHITE-LOGO



60H

METALLIC-RED/NARDO-GRAY



088

METALLIC-BLUE

## GENERAL TECHNICAL FEATURES

- Goggles fastening system
- ITW Buckle
- Removable ear pads
- Rotor size micro adjustments
- Thermoformed, removable and washable liner

## MATERIALS

- 100% EPS Inner shell
- 100% Polycarbonate

## HOMOLOGATION

- ASTM F-2040
- CE EN 1077 type B

## SCARABEO HORIZON



## PART NUMBER

204930007

## SIZES

S

The Dainese Scarabeo collection offers young skiers the technologies developed for World Cup athletes and used in international competition. All the safety of the professionals, to protect the champions of tomorrow. The SCARABEO HORIZON goggles combine an extremely wide field of vision with the quality of the Carl Zeiss® multi-layer lens, to tackle the most demanding descents in all conditions with maximum control. The antifog treatment and large upper and lower air vents, designed to interact perfectly with the air vents of Dainese Scarabeo helmets, offer the ideal balance inside the mask.

## OVERVIEW

- Kids' ski mask with Carl Zeiss® multi-layer lens, wide field of vision, antifog treatment.

## GENERAL TECHNICAL FEATURES

- Changeable lens
- Elastic band with silicone gripper
- Extreme field of view

## MATERIALS

- Carl Zeiss® Multilayer lens S2



## SCARABEO HORIZON SPARE LENS



## PART NUMBER

204855609

## SIZES

S

An ultra-wide field of vision combined with a Carl Zeiss® Multilayer lens: the ultimate goggles for the steepest of slopes. Zeiss® technology increases contrast and filters the light for faster, more accurate vision in the snow.

**013**  
ORANGE

## OVERVIEW

- Carl Zeiss® lens for SCARABEO Horizon goggles, offering increased contrast and filtered light.

## CHARACTERISTICS

- Optics by Carl Zeiss Vision

## MATERIALS

- Carl Zeiss Fog lens S1 (only col var. 013)
- Carl Zeiss Multilayer lens S3 (only col var. 07F)

**07F**

SILVER-MIRROR





# COLLECTION OVERVIEW MAN

## JACKETS MAN

LEVITA DERMIZAX EV™ FLEXAGON JACKET



ETRA AEROSENSE-DRY CORE READY JACKET



M001 D-DRY



IVENTA DERMIZAX EV™ JACKET



ETESIA AEROSENSE-DRY JACKET



M002 D-DRY



AVERA DERMIZAX EV™ CORE READY JACKET



M003 D-DRY



SKI DOWNJACKET



LIGHT DOWNJACKET



PANTS MAN

ARIANTE DERMIZAX EV™ PANTS



ONIRA AEROSENSE-DRY PANTS



P003 D-DRY®



MID LAYERS MAN

MEVO FULL ZIP MID



ESPERA FULL ZIP MID



THERMAL INNER JACKET



HP MID



W001 HYBRID MID



W001 HYBRID VEST



W002 MID FULL ZIP



# COLLECTION OVERVIEW WOMAN

## JACKETS WOMAN

ALVEA DERMIZAX EV™ CORE READY WMN JACKET



ZIVES AEROSENSE-DRY WMN JACKET



VIRTUS DERMIZAX EV™ WMN JACKET



NOVA AEROSENSE-DRY WMN JACKET



LIGHT DOWNJACKET WMN



PANTS WOMAN

LIGERA DERMIZAX EV™ WMN PANTS



OPRA AEROSENSE-DRY WMN PANTS



EIRA SOFTSHELL WMN PANTS



MID LAYERS WOMAN

MEVO FULL ZIP WMN MID



ESPERA FULL ZIP WMN MID



W001 MID FULL ZIP WMN



HP WMN MID



# TECHNOLOGIES

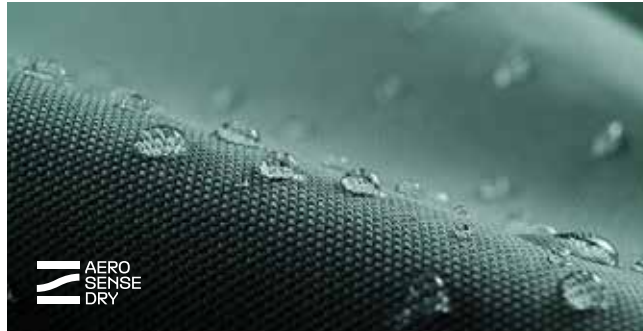
DERMIZAX™ EV  
AERSENSE-DRY  
QUICKDRY FRAME  
D-DRY® PLUS  
D-DRY®  
SUPERFABRIC®  
GOOSE DOWN  
D-THERMO INSULATION  
3M™ THINSULATE®  
PRIMALOFT® CROSS-CORE™ INSULATION  
PRIMALOFT® SILVER INSULATION BOOST  
PRIMALOFT® BLACK  
REPREVE® INSULATION  
FLEXAGON BACK PROTECTOR  
AUXAGON BACK PROTECTOR  
CRASH ABSORB  
ERGOTEK KNUCKLE INSERTS

## DERMIZAX™ EV



Dermizax™ EV is a waterproof, windproof, and wicking membrane that utilizes moving molecules, as opposed to most other membranes which have micropores. This offers a number of advantages and makes Dermizax™ shell clothing the very best on the market thanks to its high performance and superior durability. The Dermizax™ membrane is extremely flexible. It has an elasticity of more than 200%. In practice, this means that the membrane can be stretched up to twice its own length in four directions. This ensures that Dermizax™ garments are very comfortable to move in, while reducing the risk of delamination during extreme activities.

## AERONSENSE-DRY



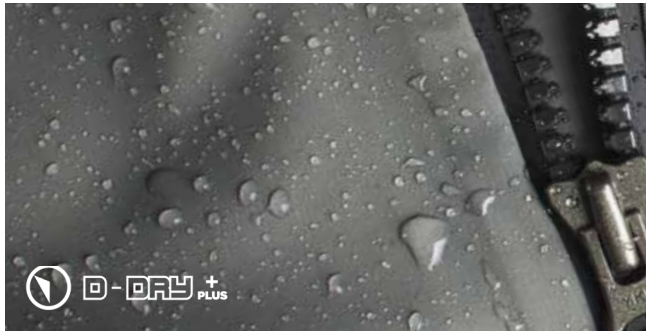
Aerosense-Dry is a two-way stretchable fabric that, thanks to its ultrathin non-porous membrane offers superb waterproofness and tough performance that can withstand any outdoor condition.

## QUICKDRY FRAME



Designed to channel moisture away from the body, Quickdry Frame® is the technology to ski always dry and comfortable. Coupled with Dainese premium materials, thanks to its functional pattern, Quickdry Frame® makes materials dry 30% faster."

## D-DRY® PLUS



D-Dry® Plus is a proprietary microporous laminated structure that creates a waterproof and breathable fabric. Micropores are thousands of times smaller than a drop of water, but larger than water vapor, so they exclude water allowing moist vapor on the inside to move outward. D-Dry® Plus is devised of a unique, new three layer construction. This includes an ultra lightweight scrim fabric that is laminated on the back of the waterproof/breathable layer, sandwiching between the scrim, the membrane and the face fabric. This new overall construction is lighter, more packable and more durable. D-Dry® Plus effectively balances protection from rain and snow on the outside (30.000 mm water column) with the ability to let warm perspiration escape outward during high-output activities (30.000 g/m2/24hrs).

## D-DRY®



D-Dry® is a technology that provides optimum impermeability to water and air. Its elevated breathability ensures the evaporation of perspiration in all weather conditions.

## SUPERFABRIC®



SuperFabric® is among the most durable, toughest fabric in the world, an innovative ceramic-coated low friction material that can provide very high levels of abrasion and slash resistance. SuperFabric® technology takes a fabric and overlays it with tiny plates ("guard plates") in a specific arrangement. The gaps between guard plates allow complete flexibility. It won't snag like knitted fabrics, which is especially important in helping protect against the additional injuries caused by material catching or pulling. It allows air to pass in and around the tiny guard plates creating a remarkable air-breathing product.



## GOOSE DOWN



Goose down is the layer of underplumage that geese have beneath their feathers to keep them warm and dry. A down cluster is soft and fluffy and has filaments growing in all directions. Unlike feathers, down does not have quills. Goose down is traditionally used to fill pillows, duvets and other types of bedding. Goose down clusters are superior as they have larger and so possess more fill power and therefore have better insulating properties than down from any other bird. Goose down is luxuriously soft, resilient and has excellent insulating properties. It varies in colour from white to dark gray. It is also extremely breathable. Water vapour can pass through the down whilst the air pockets retain their warmth. These properties make goose down is an excellent choice of filling for duvets and other bedding.

## D-THERMO INSULATION



Dainese's synthetic microfiber thermal insulation material. It offers good standard in terms of warmth to weight ratio and a relatively good compressibility.

## 3M™ THINSULATE™



3M™ Thinsulate™ Insulation Type G is a workhorse insulation – warm, durable, versatile, yet lightweight. These insulations help trap and hold body heat, while still allowing moisture to escape. The lofty profile enables versatile garment design, with extra warmth and durability. It's capable to hold up in the harshest conditions, while the fiber bonded matrix construction allows for a great durability.

## PRIMALOFT® CROSS-CORE™ INSULATION



PrimaLoft® has established itself as the world leader in providing comfort solutions with high-performance insulation, fabrics and yarns through an unwavering commitment to pushing the boundaries of material science. We are constantly striving to create innovative new technologies that unlock your potential to connect with the outdoors. The PrimaLoft® Cross Core™ series represents a significant advancement in our technological capabilities. The PrimaLoft® Cross Core™ series fuses multiple PrimaLoft® technologies to create next-level comfort and performance.

## PRIMALOFT® SILVER INSULATION BOOST



A hybrid of PrimaLoft® Silver Insulation Down Blend and PrimaLoft® Silver Insulation, PrimaLoft® Silver Insulation Boost is a fusion of 80% PrimaLoft® ultra-fine fibers and 20% water-repellent down engineered to deliver incredible lightweight warmth and wet weather performance in a luxuriously soft and remarkably slim silhouette. Unmatched warmth-to-thickness thermals mean more warmth in a smaller package for greater agility and freedom of movement while a PrimaLoft® proprietary treatment ensures protective performance in variable conditions. For streamlined performance this solution blends the wet-weather protection of PrimaLoft® synthetic insulation with the enhancement of down.

## PRIMALOFT® BLACK



The PrimaLoft® family of insulations is widely regarded as the highest-performing on the market, offering comfort and protection in variable weather conditions. PrimaLoft® Black Insulation - 80% PCR is no different, offering the warmth, softness and lightweight comfort you expect to deliver performance you can feel. It's packed with everything you need to brave the elements. And best of all it contains 80%-post consumer recycled material.

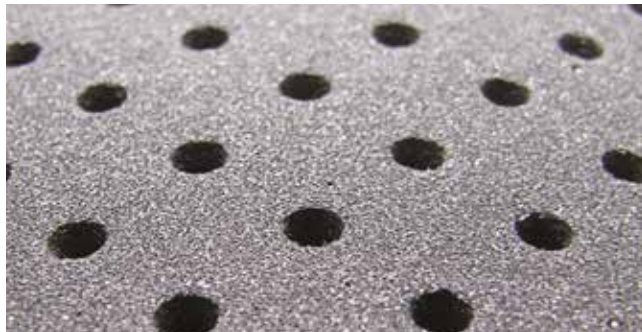


## REPREVE® INSULATION



Repreve® is an innovative, eco-friendly thermal insulation technology produced by transforming post-consumer plastic into comfortable, environmentally friendly padding. The process involves the reduction into fragments, and subsequent melting, of the re-formed plastic to granules, which are converted into a lightweight, soft, and durable padding material. This sustainable method not only reduces plastic waste, but also minimizes the need for new raw materials making it environmentally friendly. Repreve® recycled padding provides excellent thermal insulation for maximum protection in variable weather conditions, ensuring comfort and freedom of movement in technical garments used for skiing and other winter outdoor activities.

## CRASH ABSORB



Special material (water-repellent elastic-visco nitrile rubber) with shape retention memory and excellent energy absorption that adapts perfectly to the shape of the body and ensures optimum fit.

## FLEXAGON BACK PROTECTOR



Flexagon redefines the standards of protective comfort with its innovative construction technology. The exceptional flexibility is aided by overlapping layers of Crash Absorb® memory retention foam that move independently of one another, and follow the anatomy of the body. Its ergonomic pattern of hexagon shaped soft pads provide comfort and maximum freedom of movement (6 sides, mobility on the 30° 90° and 150° axes) along with effective protection.

## AUXAGON BACK PROTECTOR



Inspired by the geometry of auxetic structures, which expand in all directions when placed under tension, Auxagon protective technology ensures extreme flexibility and adaptability, following the movements of the human body with extreme precision. Ultimate ergonomics for a superior fit on the back. Auxagon protectors are composed of three independent layers, which glide over each other, offering exceptional mobility for maximum freedom of movement during physical activity. Lightweight and comfortable with maximum protection in all conditions.

## ERGOTEK KNUCKLE INSERTS



Dainese Ergotek technology is the ultimate expression of ergonomics and protection. Developed by combining polyurethane and carbon fiber inserts, it allows the fingers to be moved separately, guaranteeing a superior safety of the knuckles. This innovative technology applied to gloves is the result of studies carried out in World Cup Alpine Ski races. Thanks to their unique design, the hand stays light and has a total freedom of movement. It is the new benchmark in terms of protection and comfort.

TEXTILE MAN

	XS	S	M	L	XL	2XL	3XL
EU	42	45	48	51	54	57	60
US	32	34/36	38	40/42	44	46/48	50
chest (cm)	81-87	87-93	93-99	99-105	105-111	111-117	117-123
waist (cm)	69-75	75-81	81-87	87-93	93-99	99-105	105-111
hip (cm)	83-89	89-95	95-101	101-107	107-113	113-119	119-125
height (cm)	163-167.5	167.5-172	172-176	176-180	180-184	184-188	188-189
inseam (cm)	76-78	78-80	80-82	82-84	84-85	85-86	86-87
sleeve (cm)	56-57	57-58.5	58.5-60	60-61	61-62	62-62.5	62.5-63

TEXTILE WOMAN

	XXS	XS	S	M	L	XL
US	6	8	10	12	14	16
chest (cm)	72-76	76-80	80-84	84-88	88-92	92-96
breast (cm)	76-80	80-84	84-88	88-92	92-96	96-100
waist (cm)	56-60	60-64	64-68	68-72	72-76	76-80
hip (cm)	82-86	86-90	90-94	94-98	98-102	102-106
height (cm)	157-160	160-163	163-166	166-169	169-172	172-175
inseam (cm)	73-75	75-76	76-78	78-79	79-80	80-81
sleeve (cm)	51-52	52-54	54-55	55-57	57-58	58-59

RIBBO

	110 cm	122 cm	140 cm	152 cm	164 cm
4-6 yo	-10cm				
6-8 yo		-10cm			
9-10 yo			-10cm		
11-12 yo				-10cm	
13-14 yo					-10cm

GLOVES MAN - UNISEX

	XXXXS	XXS	XS	S	M	L	XL	XXL	XXXL
GLOVES (INC)	6.5	7	7.5	8	8.5	9	9.5	10	10.5
PALM (mm)	165	178	191	203	216	229	241	254	267

GLOVES WOMAN

		XS	S	M	L	XL
GLOVES (INC)		6	6.5	7	7.5	8
PALM (mm)		152	165	178	191	203

SCARABEO GLOVES

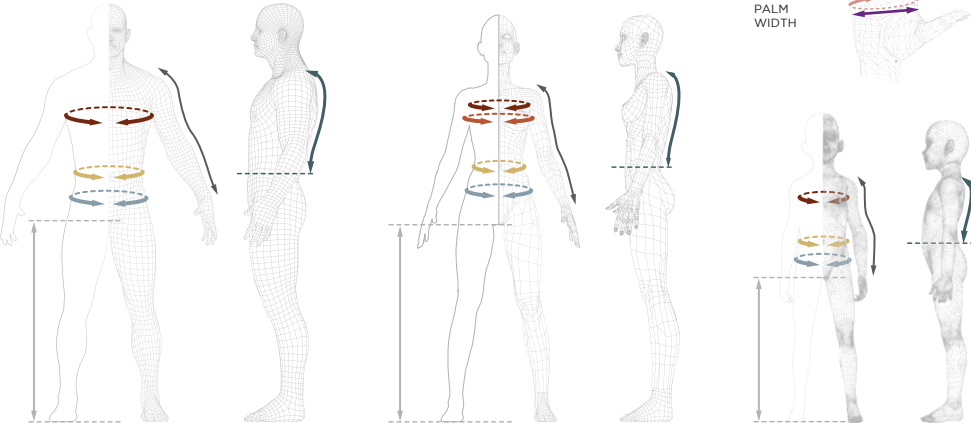
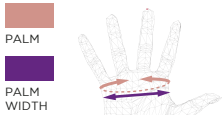
		JS	JM	JL	JXL
GLOVES (INC)		4	4.5	5	5.5
PALM WIDTH (mm)		85,5	89,5	93,5	97,5

ELBOW PROTECTORS

	S	M	L	XL
forearm circumference (cm)	27	28	29	31
bicep circumference (cm)	29	31	32	34

KNEE PROTECTORS

	S	M	L	XL
thigh circumference (10 cm above knee joint)	47	52	54	59
calf circumference	33	36	39	42



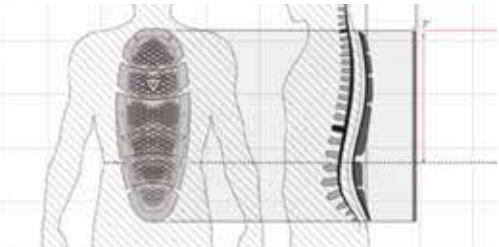
BACK PROTECTORS

	XS	S	M	L	XL	XXL	XXXL
MAN	73-79	79-85	85-91	91-97	97-103	103-109	109-115
● waist reference (cm)							
● waist to shoulder (cm)							
CORE							
FLEXAGON WAISTCOAT 2 MAN							
FLEXAGON BACK PROTECTOR 2 MAN							
AUXAGON WAISTCOAT MAN							
AUXAGON VEST							
AUXAGON BP G1							
AUXAGON BP G2							
JUNCTION WAVE 02							
JUNCTION WAVE 03							
D-AIR® SKI 2 MAN							
WMN							
● waist reference (cm)							
● waist to shoulder (cm)							
CORE							
FLEXAGON WAISTCOAT 2 LADY							
FLEXAGON BACK PROTECTOR 2 LADY							
AUXAGON WAISTCOAT WMN							
JUNCTION WAVE 02							
JUNCTION WAVE 03							
D-AIR® SKI 2 WOMAN							
KID							
● waist reference (cm)							
● waist to shoulder (cm)							
SCARABEO BACK PROTECTOR 2							
SCARABEO FLEXAGON WAISTCOAT 2							
SCARABEO AUXAGON VEST							

HEAD CIRCUM. (cm)

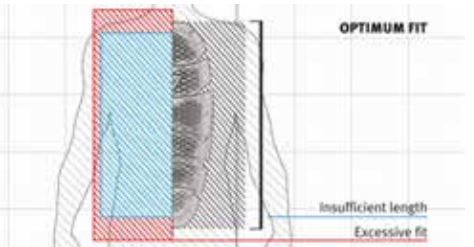
	48	49	50	51	52	53	54	55	56	57	58	59	60	61	62
NUCLEO MIPS PRO															
NUCLEO MIPS															
NUCLEO															
NUCLEO ASIAN FIT															
ELEMENTO MIPS															
ELEMENTO															
R001 CARBON															
R001 FIBER															
SCARABEO R001 ABS															
SCARABEO ELEMENTO															
SCARABEO ELEMENTO AF															

MEASUREMENTS



As it is not currently possible to industrially produce tailored back protectors, back protector must be worn by people with anthropometric characteristics lying within a certain range. A back protector is suitable for a person if its height does not exceed the seventh cervical vertebra and if the minimum area of the model is related to a waist shoulder height greater than or equal to that of the person.

CHOOSE THE SIZE OF A PROTECTOR CORRECTLY



The choice of the correct size of a back protector, according to the standard, is determined by the Waist-Shoulder height. This is the difference in height between the midpoint of the shoulder and the waistline (immediately above the hipbone). According to the Dainese standard, this measurement must then be qualified by the correct dimension of waist strap, identified by a size (ex: XS, S, M...). It is not correct to define the measure of the backprotector on the basis of the height of the person, because even if the back could have the same dimension, the legs could have a different length.



